



25 Treeview Place SARATOGA NSW

3 1 2

Cosy and generous size family home with stunning views of Brisbane Water and beyond to Riley's Island. This well-presented split level design features high cathedral ceilings and a great sense of space. Upstairs are all 3 bedrooms and a large bathroom all with peaceful leafy outlooks. Downstairs offers a spacious open plan kitchen, living and dining area, complete with a cosy combustion fireplace and access to the front deck offering privacy and spectacular views from a commanding position. The location is situated within 400m the waterfront pathway and Ferry service. In addition are two under house parking spots and turning space to make entering and exiting the property easy.

Type : House
Land Size : 1495 sqm
View : <https://www.changeproperty.com.au/sale/nsw/central-coast-region/saratoga/residential/house/8549737>

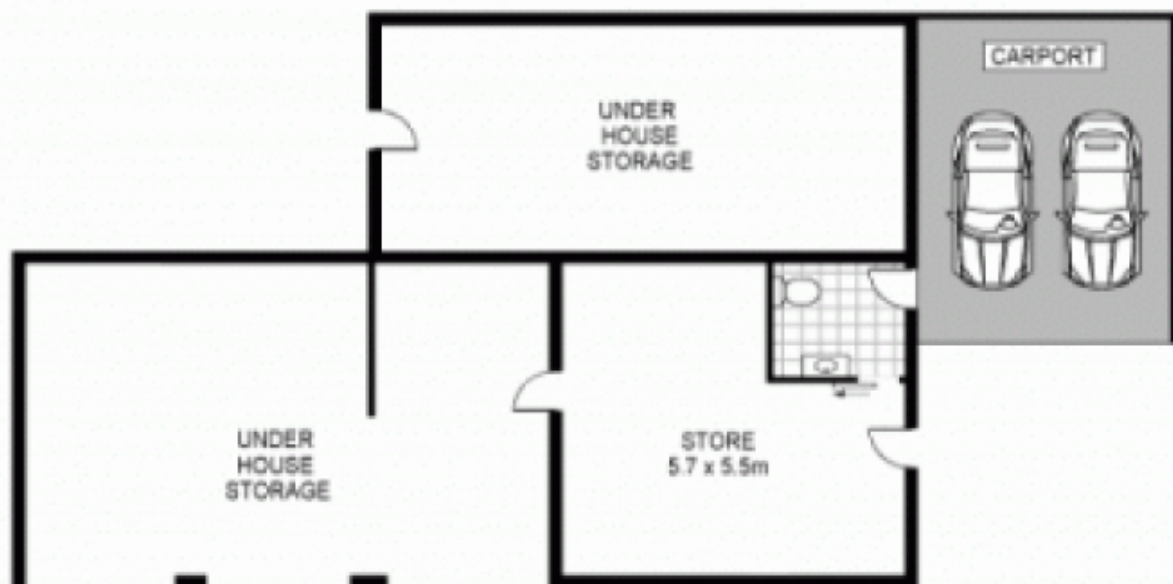


Tom O'Gorman
02 4369 2222

[For full version visit the website](https://www.changeproperty.com.au)



UPPER LEVEL



LOWER LEVEL



Scale in metres indicative only. Dimensions are approximate. All information contained herein is gathered from sources we believe to be reliable. However we cannot guarantee its accuracy and interested persons should rely on their own enquiries.

INT : 146m²



25 Treeview Place, Saratoga