



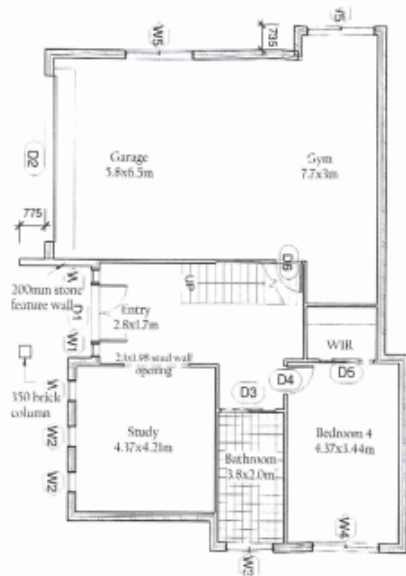
16 Figtree Bay Drive KINCUMBER NSW

4 3 2

Surrounded by prestigious homes in the highly sought-after Figtree Bay Estate, this luxurious residence showcases a host of quality finishes and inclusions over two expansive levels set on a 650sqm.
 *Caesar Stone kitchen with great walk-in pantry
 *Levelled grassed backyard with room for a lap pool (STCA)
 *Low maintenance landscaped gardens with side access
 *Metres to a park & Brisbane Waters Broadwalk
 From the impressive entry to the multiple living areas it is a perfect spacious family home. The light filled lounge opens to a large deck with views of the Brisbane Waters and the dining and third lounge flow to the outdoor alfresco area. To the ground floor there is a generous 4th bedroom with a walk-in-robe, huge bathroom and lounge plus the oversized

Type : House
Land Size : 650 sqm
View : <https://www.changeproperty.com.au/sale/nsw/central-coast-region/kincumber/residential/house/8549770>

[For full version visit the website](https://www.changeproperty.com.au)



Ground Floor



First Floor

16 Figtree Bay Drive,
Kincumber



Scale in metres. Indicative only. Dimensions are approximate. All information contained herein is gathered from sources we believe to be reliable. However we cannot guarantee its accuracy and interested persons should rely on their own enquiries.