

5 Mount Place GREEN POINT NSW

5 🛏 3 🚿 2 🚗

Set in a quiet, elevated position this light filled home has been designed with family and entertaining mind, from the grand entry to the formal and informal living spaces.

* Open plan living dining and kitchen with access to outdoor entertaining area

* Kitchen with granite benchtops walk in pantry

* 5 Bedrooms, the generous master suite including WIR, built-ins, ensuite and balcony access with mountain views

* Lovingly tended gardens set on an easy care 575sqm block with fenced rear garden

Large double lock up garage with internal access and high ceiling. Complete with ducted air conditioning throughout, this home offers so much for those looking for a peaceful cul-de-sac location just minutes to Erina Fair, transport and

Type : House

Land Size : 575 sqm

View : <https://www.changeproperty.com.au/sale/nsw/central-coast-region/green-point/residential/house/8549835>



Tom O'Gorman
02 4369 2222

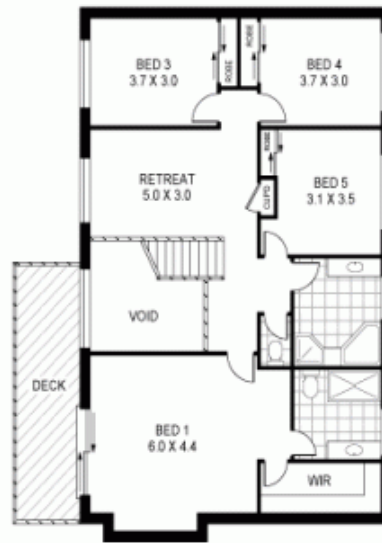


Alison Dorrell
02 4369 2222

[For full version visit the website](https://www.changeproperty.com.au)



GROUND FLOOR



FIRST FLOOR

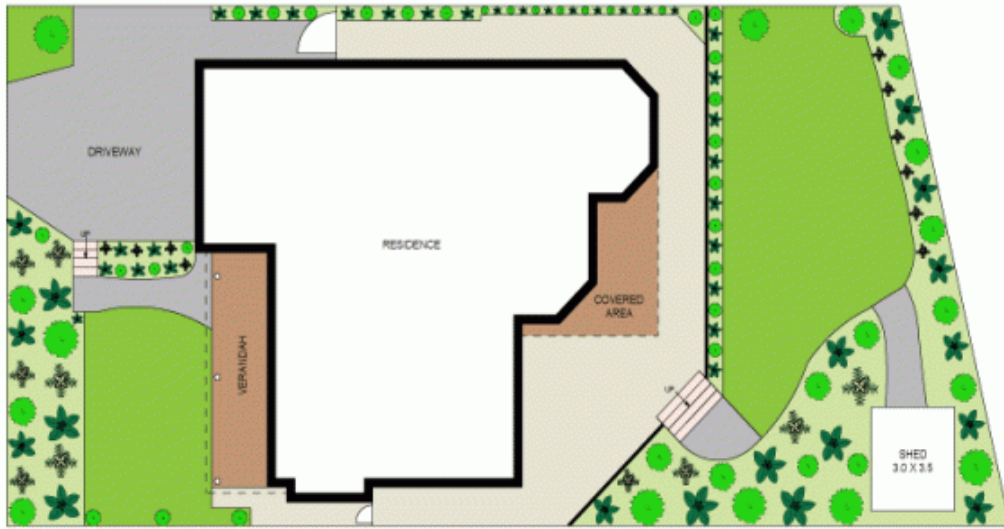


5 Mount Place, Green Point

Disclaimer : Plans prepared by Key2Exposure. Scale in metres. Indicative only. Dimensions are approximate. All information contained herein is gathered from sources we believe to be reliable. However we cannot guarantee its accuracy and interested persons should rely on their own enquiries.



GROUND FLOOR	130m ²
FIRST FLOOR	121m ²
GARAGE	35m ²
VERANDAH	19m ²
COVERED AREA	13m ²
DECK	19m ²
TOTAL	329m ²



SITE PLAN



5 Mount Place, Green Point



Disclaimer : Plans prepared by Key2Exposure. Scale in metres. Indicative only. Dimensions are approximate. All information contained herein is gathered from sources we believe to be reliable. However we cannot guarantee its accuracy and interested persons should rely on their own enquiries.