



20 Cameron Crescent KINCUMBER NSW

3 1

Set privately and surrounded by landscaped gardens, this very neat and tidy brick & tile home makes perfect investment sense with tenants in situ and council approval for a granny flat. Located just a 10 minute drive to the surf beaches of Copacabana and Avoca Beach, the bus stop and local park are within walking distance and the home is also close to schools and shops.

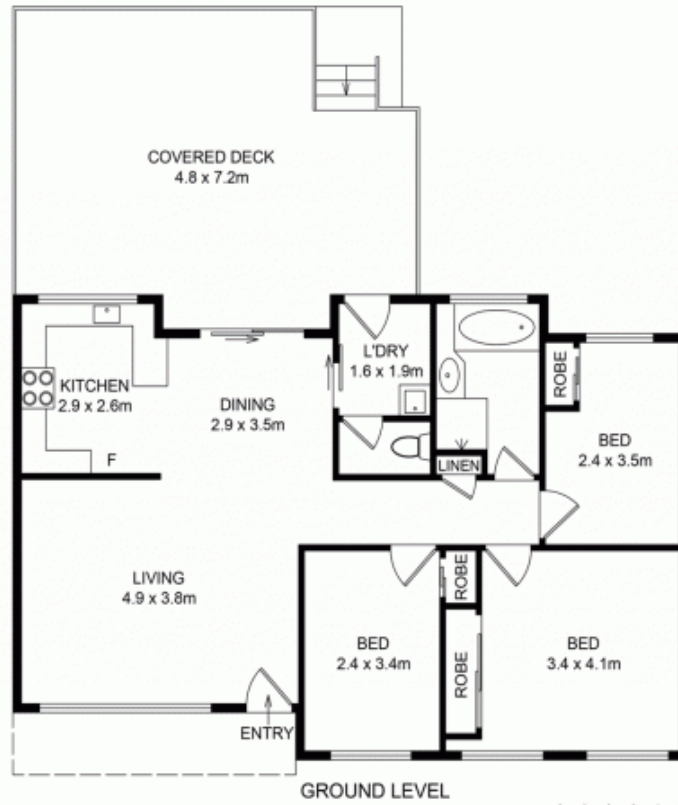
The home offers an open plan living and dining area that leads to the large covered entertaining area and fully fenced back yard that can be easily accessed from the side of the property through a double gate. Complete with 3 bedrooms, 2 with built-ins and an internal laundry with external access.

[For full version visit the website](https://www.changeproperty.com.au)

Type : House
Land Size : 566 sqm
View : <https://www.changeproperty.com.au/sale/nsw/central-coast-region/kincumber/residential/house/8549873>



Tom O'Gorman
02 4369 2222



20 Cameron Crescent, Kincumber, Australia.

INT AREA : 72.00 m²
DECK AREA: 34.56 m²

Disclaimer : Plans prepared by Key2Exposure. Scale in metres. Indicative only. Dimensions are approximate. All information contained herein is gathered from sources we believe to be reliable. However we cannot guarantee its accuracy and interested persons should rely on their own enquiries.





SITE PLAN

SCALE (METRES)

INT AREA : 72.00 m²
DECK AREA: 34.56 m²

20 Cameron Crescent, Kincumber, Australia.

Disclaimer : Plans prepared by Key2Exposure. Scale in metres. Indicative only. Dimensions are approximate. All information contained herein is gathered from sources we believe to be reliable. However we cannot guarantee its accuracy and interested persons should rely on their own enquiries.