



1 Pixie Avenue GREEN POINT NSW

3 3 2

Nestled in a private and quiet waterfront reserve position, this modern home is all about lifestyle choices whilst maintaining the convenience of being close to every amenity.

With enormous street appeal and surrounded by established gardens, the home is impeccably presented and offers the most beautiful outlook over Brisbane Water, from Saratoga to Woy Woy and Point Clare from almost every room.

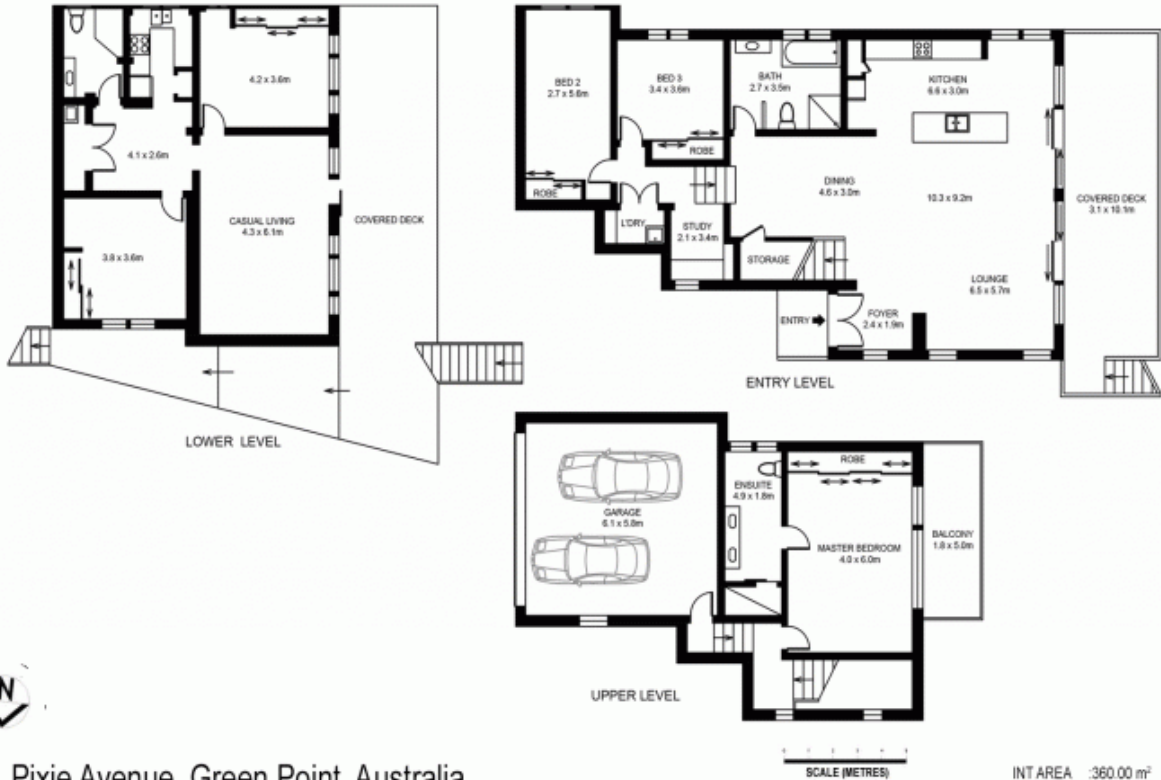
Upon entry through double doors you will find the open plan living, dining and entertainers' kitchen that flows to the large covered deck through double sliding doors - perfect

[For full version visit the website](https://www.changeproperty.com.au)

Type : House
Land Size : 588 sqm
View : <https://www.changeproperty.com.au/sale/nsw/central-coast-region/green-point/residential/house/8549876>



Tom O'Gorman
02 4369 2222



1 Pixie Avenue, Green Point, Australia.

Disclaimer : Plans prepared by Key2Exposure. Scale in metres. Indicative only. Dimensions are approximate. All information contained herein is gathered from sources we believe to be reliable. However we cannot guarantee its accuracy and interested persons should rely on their own enquiries.

INT AREA :360.00 m²
DECK AREA:106.00 m²



SITE PLAN

1 Pixie Avenue, Green Point, Australia.

SCALE (METRES)

INT AREA :360.00 m²
DECK AREA:106.00 m²

Disclaimer : Plans prepared by Key2Exposure. Scale in metres. Indicative only. Dimensions are approximate. All information contained herein is gathered from sources we believe to be reliable. However we cannot guarantee its accuracy and interested persons should rely on their own enquiries.

