



5 Letitia Close GREEN POINT NSW

4 2 1

This much loved brick and tile home is surrounded by lovely established gardens in a quiet pocket of Green Point and is close to the schools, shops and transport.

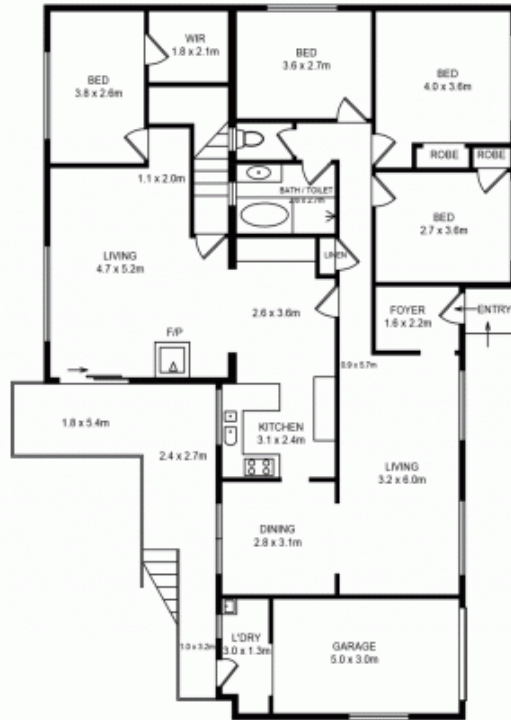
With formal and informal living areas, including a large deck accessed from both the dining and family room, the home provides plenty of room for the family with 4 bedrooms plus additional rumpus / guest accommodation downstairs.

Complete with a beautiful in-ground pool the home also offers:

* Lounge room with split system air conditioning

[For full version visit the website](https://www.changeproperty.com.au)

Type : House
Land Size : 668 sqm
View : <https://www.changeproperty.com.au/sale/nsw/central-coast-region/green-point/residential/house/8549877>



UPPER LEVEL

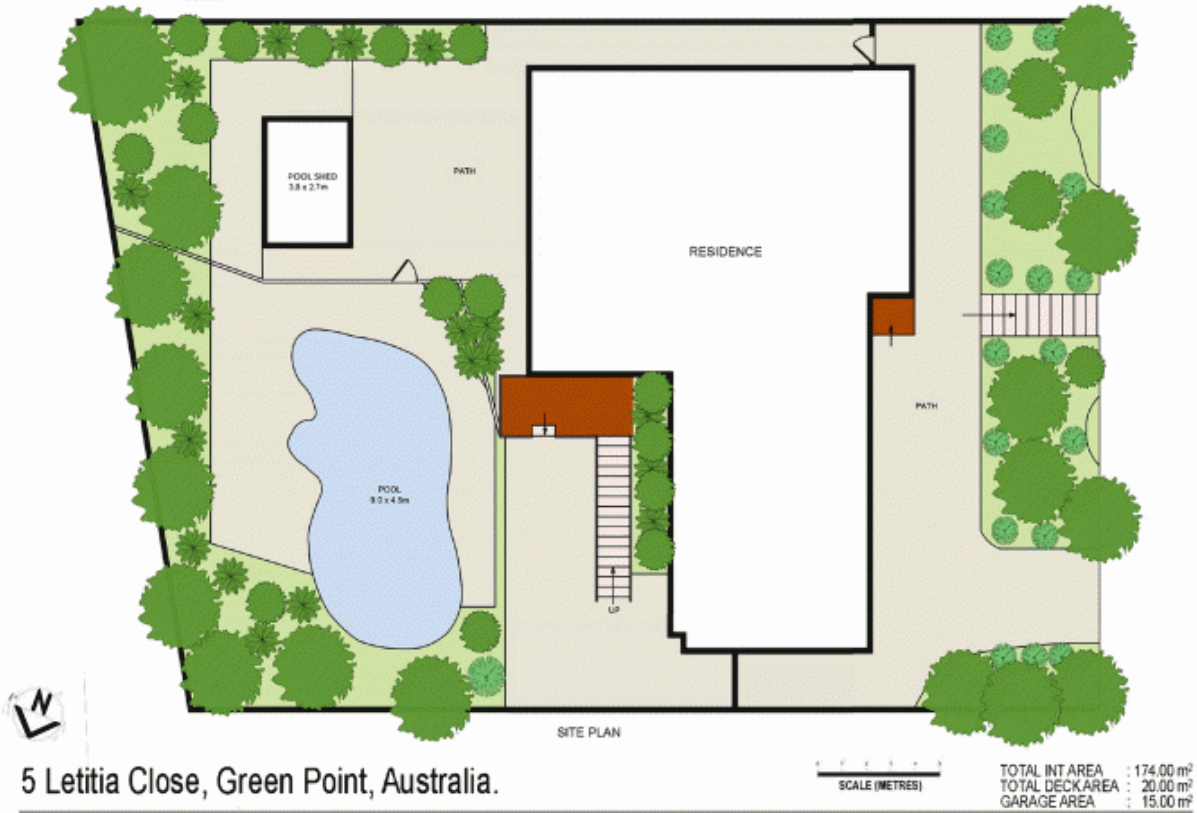
5 Letitia Close, Green Point, Australia.



TOTAL INT AREA	: 174.00 m ²
TOTAL DECK AREA	: 20.00 m ²
GARAGE AREA	: 15.00 m ²

Disclaimer : Plans prepared by Key2Exposure. Scale in metres. Indicative only. Dimensions are approximate. All information contained herein is gathered from sources we believe to be reliable. However we cannot guarantee its accuracy and interested persons should rely on their own enquiries.





5 Letitia Close, Green Point, Australia.

Disclaimer: Plans prepared by Key2Exposure. Scale in metres. Indicative only. Dimensions are approximate. All information contained herein is gathered from sources we believe to be reliable. However we cannot guarantee its accuracy and interested persons should rely on their own enquiries.