



16 Bourke Avenue YATTALUNGA NSW

3 2 2

Set on a near level block with acreage behind, this two storey home has loads of potential and gorgeous views of Brisbane Water.

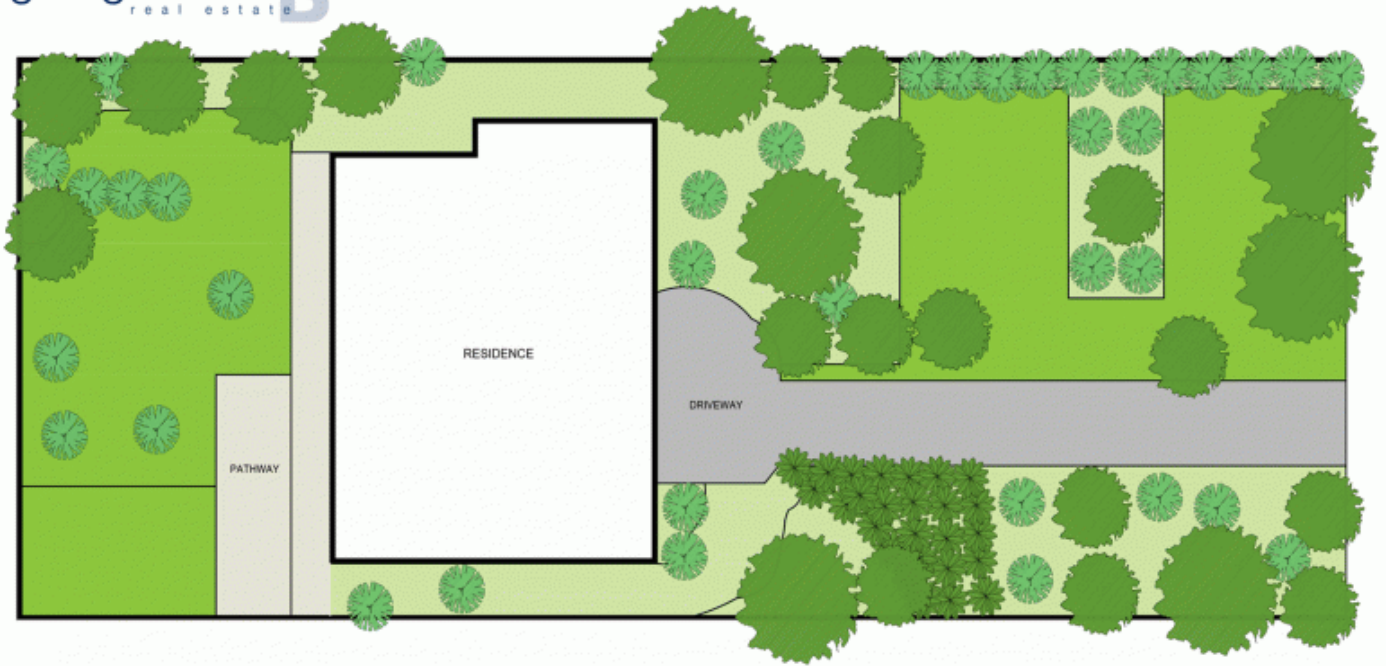
Surrounded by established gardens the downstairs section of the home offers a massive versatile room with a bathroom that could easily be used as a bedroom / rumpus or be divided to provide both. Upstairs is an open plan living kitchen and dining area that opens to a covered verandah and takes in serene views of Brisbane Water. On this level there are two additional bedrooms, the second bedroom with a built-in-robe, access to the verandah and also takes in the lovely view.

[For full version visit the website](https://www.changeproperty.com.au)

Type : House
Land Size : 575 sqm
View : <https://www.changeproperty.com.au/sale/nsw/central-coast-region/yattalunga/residential/house/8549880>



Tom O'Gorman
02 4369 2222



SITE PLAN

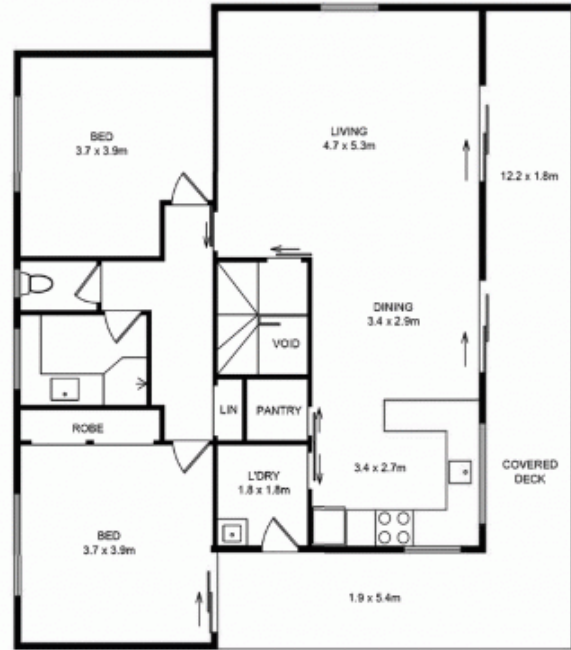
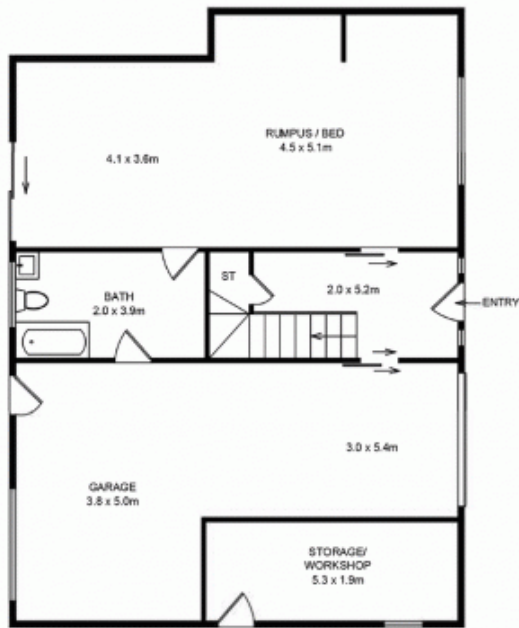


16 Bourke Avenue, Yattalunga, Australia.



TOTAL INT AREA	: 146.00 m ²
TOTAL DECK AREA	: 32.00 m ²
GARAGE AREA	: 35.00 m ²
STORAGE AREA	: 10.00 m ²

Disclaimer: Plans prepared by Key2Exposure. Scale in metres. Indicative only. Dimensions are approximate. All information contained herein is gathered from sources we believe to be reliable. However we cannot guarantee its accuracy and interested persons should rely on their own enquiries.



16 Bourke Avenue, Yattalunga, Australia.



TOTAL INT AREA	: 146.00 m ²
TOTAL DECK AREA	: 32.00 m ²
GARAGE AREA	: 35.00 m ²
STORAGE AREA	: 10.00 m ²

Disclaimer: Plans prepared by Key2Exposure. Scale in metres. Indicative only. Dimensions are approximate. All information contained herein is gathered from sources we believe to be reliable. However we cannot guarantee its accuracy and interested persons should rely on their own enquiries.