



12 Ladera Drive COPACABANA NSW

4 2 2

Masterfully designed, this luxurious coastal home offers relaxed lifestyle living just moments to Copacabana's beach, village and primary school.

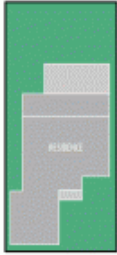
Spacious and light throughout, the home offers the 'wow' factor at every turn with stylish touches and modern finishes.

Start with the parents' retreat on the upper level featuring an expansive living room with built-in combustion fire and a luxurious master suite complemented by a large walk-in robe and stunning ensuite. There is a touch of luxe everywhere, from the dimmable lights throughout the home to underfloor heating in the ensuite.

[For full version visit the website](https://www.changeproperty.com.au/sale/nsw/central-coast-region/copacabana/residential/house/8549890)

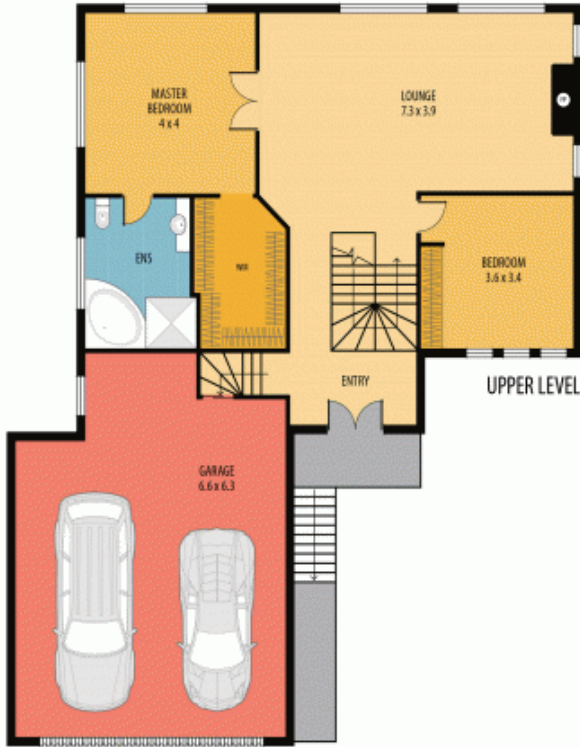
Type : House
Land Size : 506 sqm
View : <https://www.changeproperty.com.au/sale/nsw/central-coast-region/copacabana/residential/house/8549890>

SITE PLAN
(not to scale)

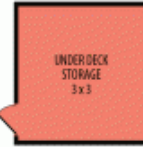


LADERA DR

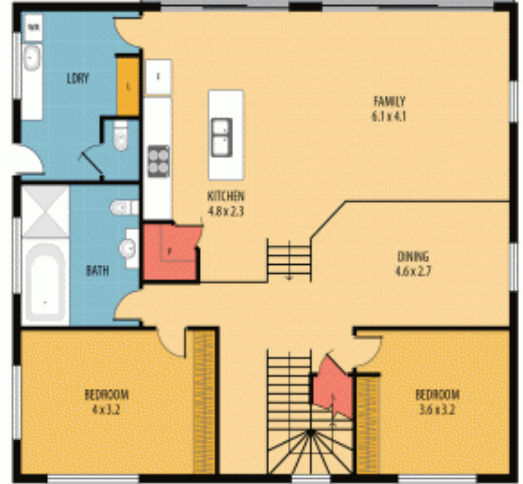
LOWER LEVEL



UPPER LEVEL



LOWER LEVEL



12 LADERA DR, COPACABANA



Disclaimer: This information has been provided to us from the vendor and/or their conveyancer or solicitor, no guarantee is given in respect of its accuracy. Any person viewing this information should make their own enquiries and only rely on those enquiries.



georgebrand