






27 Greenfield Road EMPIRE BAY NSW

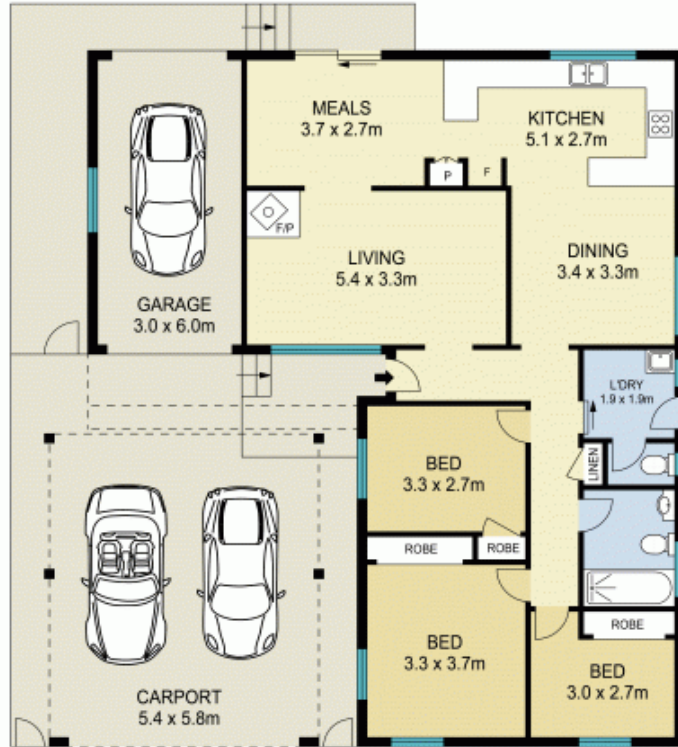
3  1  3 

Neat and tidy throughout, this charming family home is located only 500m to Empire Bay Wharf, boat ramp and the local village and is just a 1 minute drive to the local primary school. Set on a massive 765sqm block with a fenced rear garden and inground pool, this home is perfect for a young family or those looking to downsize.

Type : House
Land Size : 765 sqm
View : <https://www.changeproperty.com.au/sale/nsw/central-coast-region/empire-bay/residential/house/8549891>

From the tiled entry step into the living room with slow combustion fire and split system air conditioner, perfect for summer or winter. Complete with a family room and dining room, both leading from either side of the kitchen for ease of entertaining. With three generous bedrooms, other attributes of this lovely home include:

[For full version visit the website](https://www.changeproperty.com.au)

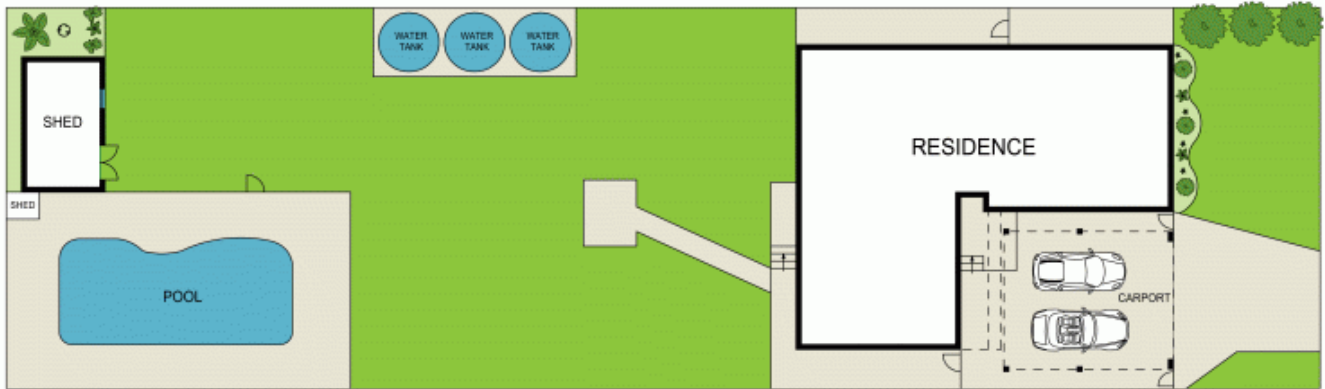


27 Greenfield Road, Empire Bay



APPROX FLOOR AREA : 187m²
GARAGE AREA : 18m²

Disclaimer : Plans prepared by Key 2 Exposure. Scale in metres. Indicative only. Dimensions are approximate. All information contained herein is gathered from sources we believe to be reliable. However we cannot guarantee its accuracy and interested persons should rely on their own enquiries.



27 Greenfield Road, Empire Bay

Disclaimer: Plans prepared by Key 2 Exposure. Scale in metres. Indicative only. Dimensions are approximate. All information contained herein is gathered from sources we believe to be reliable. However we cannot guarantee its accuracy and interested persons should rely on their own enquiries.