



## 16 Palmers Lane BENVILLE NSW

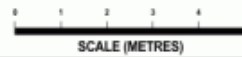
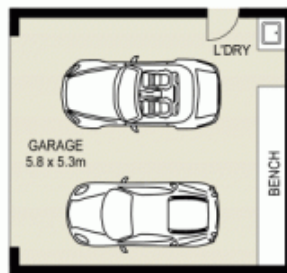
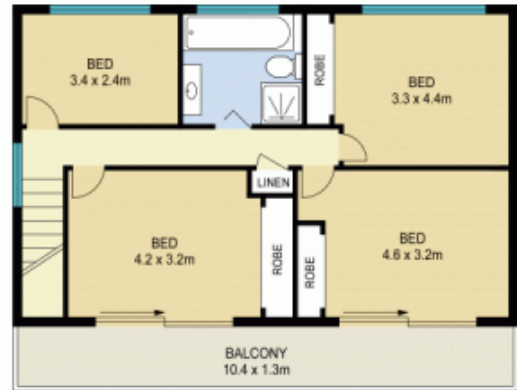
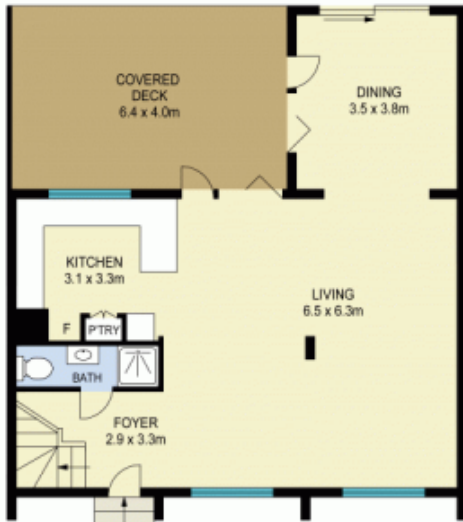
4 2 2

This lovely family home on a rare 910sqm block offers a playground for both the grown-ups and children alike within a fully fenced back garden and just 600m to Cockle Bay to enjoy fishing, kayaking and jet skiing!

Set over two storeys, the open plan living, kitchen and dining areas to the ground floor feature bamboo flooring and plantation shutters with seamless access through bi-fold timber doors to the large entertaining area and fantastic, child-friendly rear garden. The gourmet kitchen offers stainless steel appliances including a gas cook-top, dishwasher and boasts a servery to the outdoor entertaining. All bedrooms are on the first floor, all with peaceful views and two with access to the front balcony.

**Type** : House  
**Land Size** : 910 sqm  
**View** : <https://www.changeproperty.com.au/sale/nsw/central-coast-region/bensville/residential/house/8549911>

[For full version visit the website](https://www.changeproperty.com.au)



INTERNAL FLOOR AREA : 144m<sup>2</sup>  
 GARAGE AREA : 31m<sup>2</sup>  
 EXTERNAL AREA : 38m<sup>2</sup>



16 Palmers Lane, Bensville

Disclaimer : Plans prepared by Key 2 Exposure. Scale in metres. Indicative only. Dimensions are approximate. All information contained herein is gathered from sources we believe to be reliable. However we cannot guarantee its accuracy and interested persons should rely on their own enquiries.





16 Palmers Lane, Bensville

Disclaimer : Plans prepared by Key 2 Exposure. Scale in metres. Indicative only. Dimensions are approximate. All information contained herein is gathered from sources we believe to be reliable. However we cannot guarantee its accuracy and interested persons should rely on their own enquiries.

