



### 3 Irwin Place GREEN POINT NSW

3 1 1

This charming home is located in a beautifully tranquil, leafy cul-de-sac less than 2km to the local primary and high schools and only 2.5km to Erina Fair.

Entry via a private front patio leads inside to the living room and the warmth of solid timber floors throughout. The open plan kitchen and dining area enjoys a peaceful leafy outlook and flows outside to the lovely landscaped back garden. Complete with under home storage this home is priced to sell and would be perfect for those looking to downsize or for a first home, investment property.

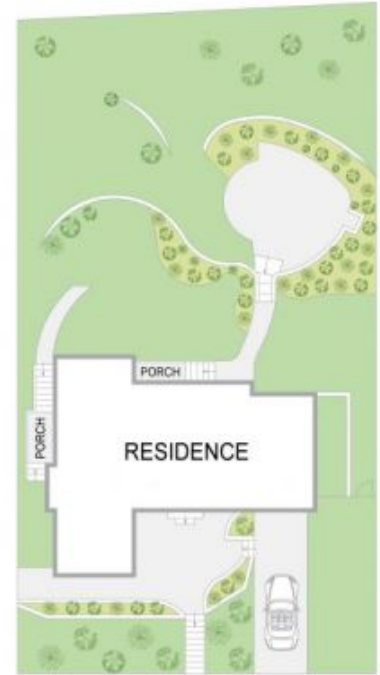
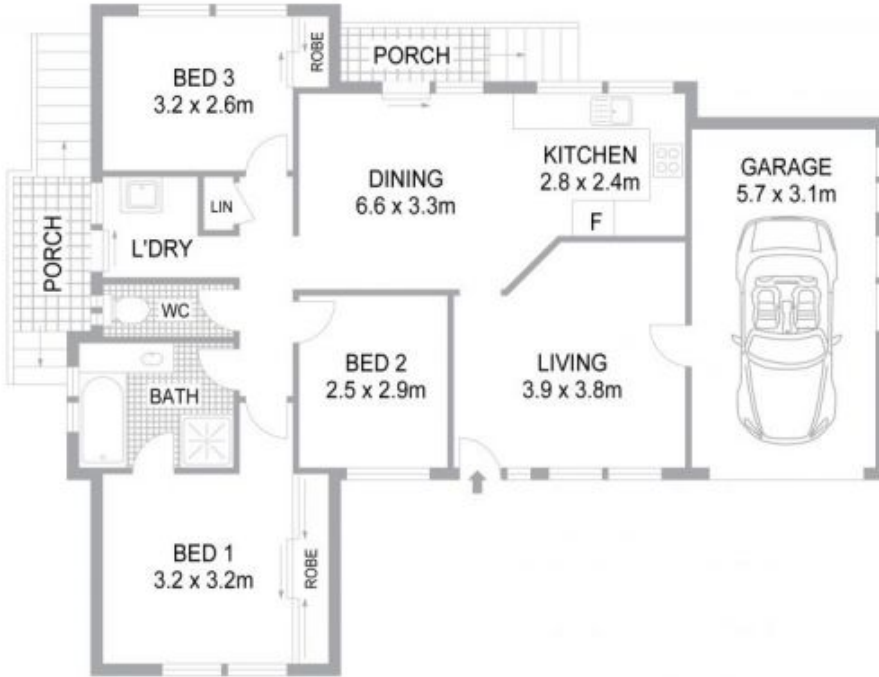
- \* Freshly painted throughout
- \* Two way bathroom

[For full version visit the website](https://www.changeproperty.com.au)

**Type** : House  
**Land Size** : 686 sqm  
**View** : <https://www.changeproperty.com.au/sale/nsw/central-coast-region/green-point/residential/house/8550037>



**Damian Rutherford**  
02 4369 2222



INTERNAL FLOOR AREA - 102m<sup>2</sup>  
 LAND SIZE - 686m<sup>2</sup>

Indicative only. All dimensions and element positions are approximate. Information on this plan comes from sources we believe to be accurate, but its accuracy is not guaranteed. Interested parties should make and rely on their own inquiries

