



10 Wullun Close NORTH GOSFORD NSW

4 2

This peaceful 4 bedroom home exudes a unique charm and is designed with relaxation and entertaining in mind. Located within a tightly-held, sought-after leafy area and in a quiet cul-de-sac within minutes of all amenities including schools, shops, parks, transport and medical facilities.

Type : House
Land Size : 613 sqm
View : <https://www.changeproperty.com.au/sale/nsw/central-coast-region/north-gosford/residential/house/8550085>

The spacious kitchen overlooks the living and dining area and provides plenty of storage with pantry and ample bench space. Other features of this charming home include:

- * North facing back yard & large rumpus room downstairs
- * Two air conditioners and a dishwasher
- * Merbau decking for outdoor entertaining

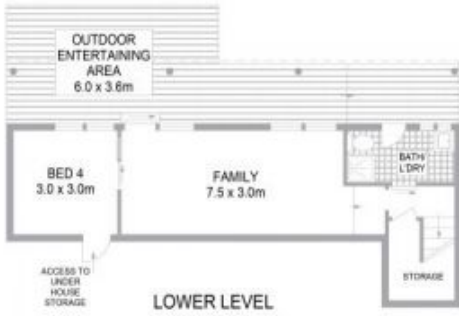
[For full version visit the website](https://www.changeproperty.com.au)



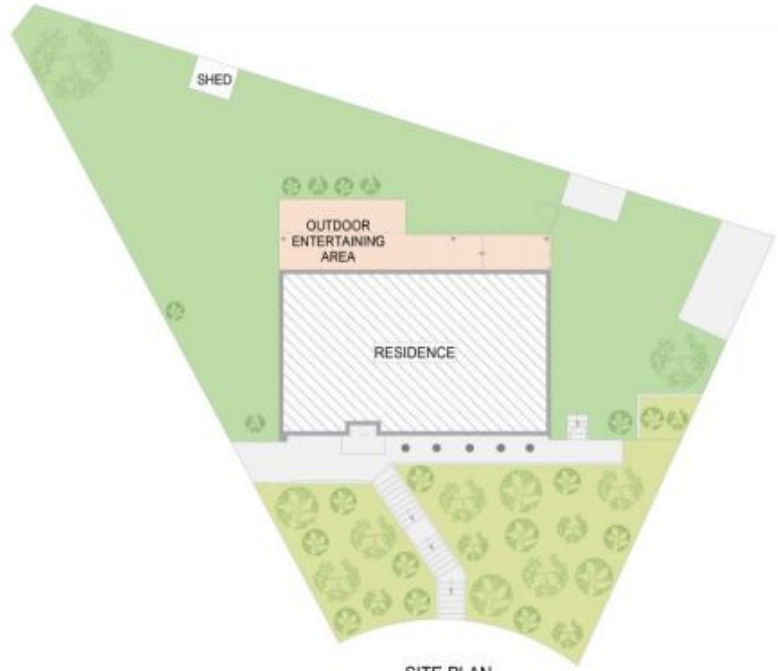
Damian Rutherford
02 4369 2222



Tom O'Gorman
02 4369 2222



INTERNAL FLOOR AREA 138m²
LAND SIZE 501m²



Indicative only. All dimensions and element positions are approximate. Information on this plan comes from sources we believe to be accurate, but its accuracy is not guaranteed. Interested parties should make and rely on their own inquiries

10 WULLUN CLOSE, NORTH GOSFORD