



19a Bourke Avenue YATTALUNGA NSW

3  2  2 

You will be delighted by the quality and style of this spacious, single level home located in the picturesque suburb of Yattalunga.

* Open plan kitchen with caesar stone bench tops and spotted gum flooring, separate formal lounge and dining areas

* North facing covered alfresco entertaining deck overlooking the "fruit salad" garden

* Large master bedroom with walk in robe and ensuite opening to your private covered verandah

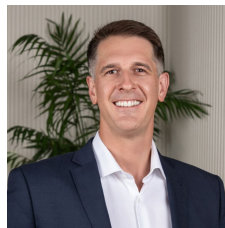
* Double garage with remote, ample storage and internal access

This beautiful home is set within easy walking distance to Brisbane Water foreshore, local cafe "Everything but the

Type : House

Land Size : 608 sqm

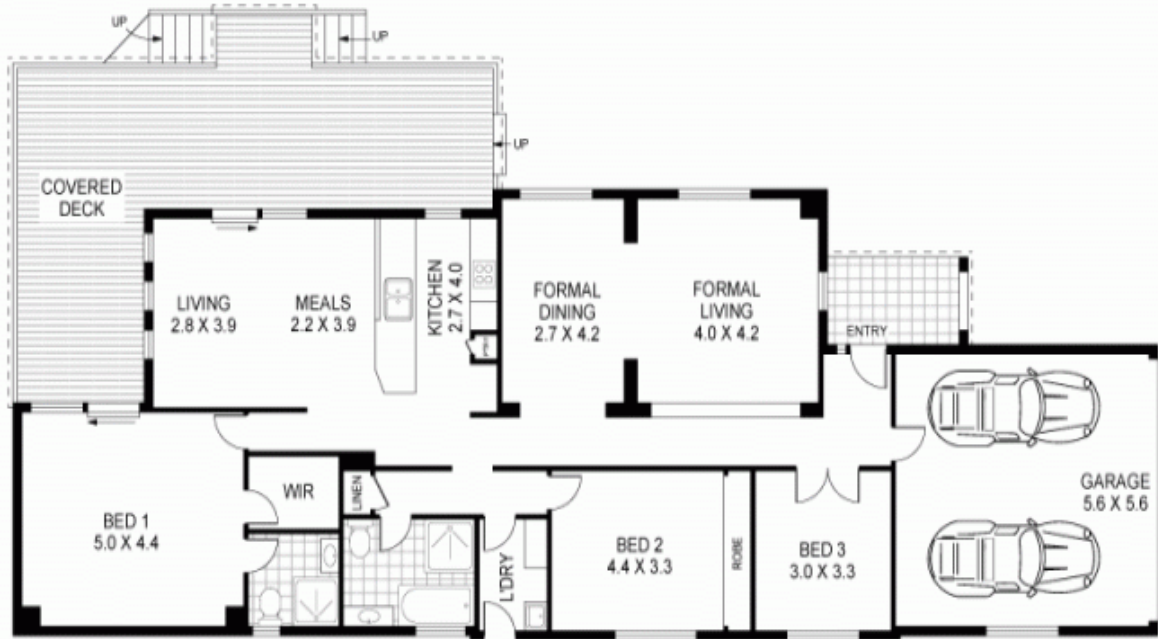
View : <https://www.changeproperty.com.au/sale/nsw/central-coast-region/yattalunga/residential/house/8550168>



Tom O'Gorman

02 4369 2222

[For full version visit the website](https://www.changeproperty.com.au)



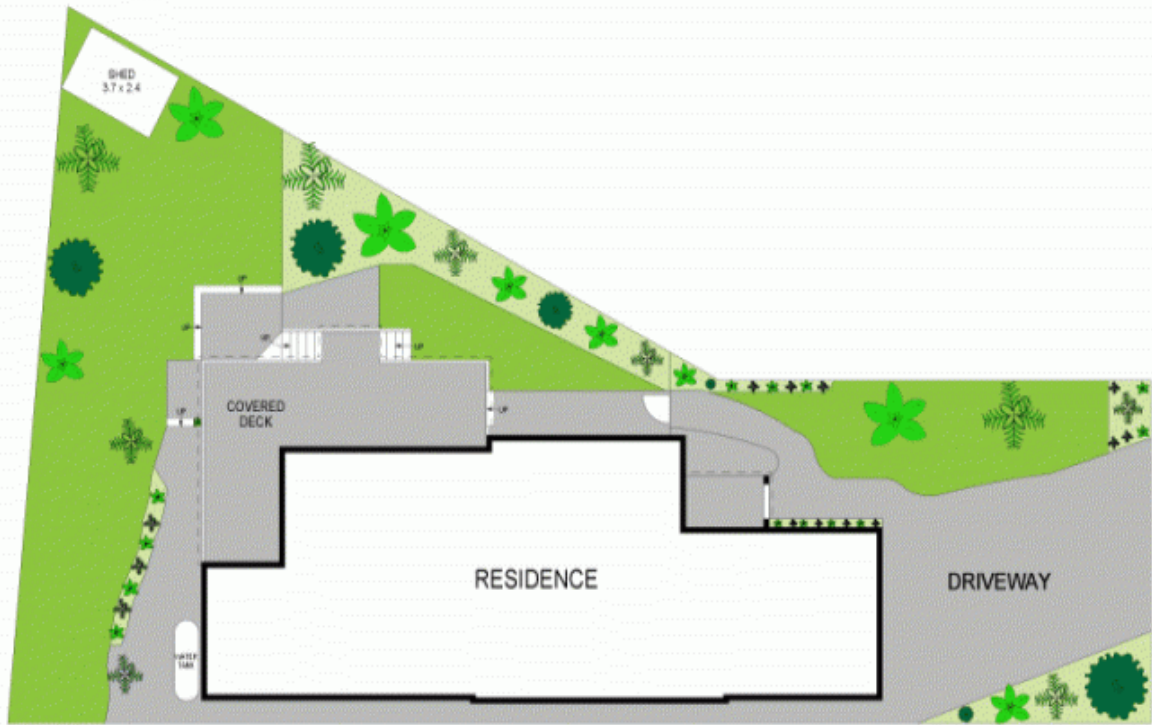
19A Bourke Avenue, Yattalunga



GROUND LEVEL	: 149m ²
GARAGE	: 31m ²
DECK/EXT	: 48m ²
TOTAL	: 229m²

Disclaimer : Plans prepared by Key2Exposure. Scale in metres. Indicative only. Dimensions are approximate. All information contained herein is gathered from sources we believe to be reliable. However we cannot guarantee its accuracy and interested persons should rely on their own enquiries.





SITE PLAN

19A Bourke Avenue, Yattalunga



Disclaimer : Plans prepared by Key2Exposure. Scale in metres. Indicative only. Dimensions are approximate. All information contained herein is gathered from sources we believe to be reliable. However we cannot guarantee its accuracy and interested persons should rely on their own enquiries.

