



1 Woodport Close GREEN POINT NSW

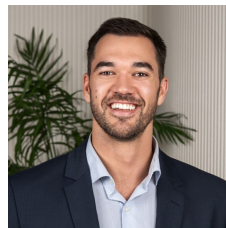
5 3 2

Centrally located to shops and schools and just a short drive to beautiful waterways and beaches, this stately home provides generously proportioned rooms and is set on a corner block with side access for your caravan or boat!

Offering a formal entry through double doors, the foyer leads to the formal lounge and dining room and also to the open plan kitchen, informal dining and family room. The ground floor also offers a bathroom and the 5th bedroom/office. The alfresco entertaining, spa and beautifully landscaped backyard will provide a welcome oasis for summer.

[For full version visit the website](https://www.changeproperty.com.au)

Type : House
Land Size : 651 sqm
View : <https://www.changeproperty.com.au/sale/nsw/central-coast-region/green-point/residential/house/8550233>

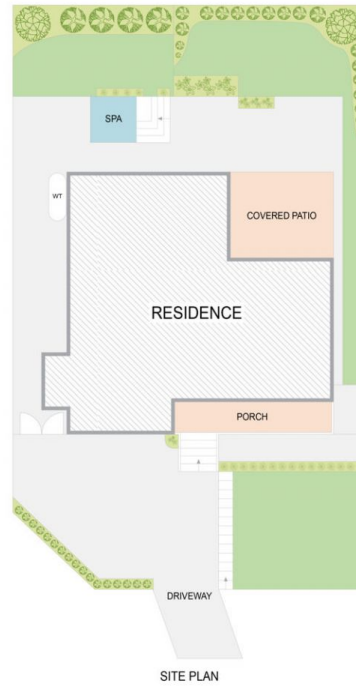
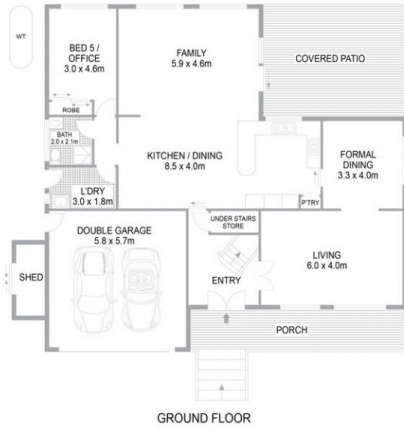


Damian Rutherford
02 4369 2222



Tom O'Gorman
02 4369 2222

1 Woodport Close, Green Point NSW 2251



INTERNAL FLOOR AREA 303m²
LAND SIZE 655m²

Indicative only. All dimensions and element positions are approximate. Information on this plan comes from sources we believe to be accurate, but its accuracy is not guaranteed. Interested parties should make and rely on their own inquiries

george**brand**

