



15 Samantha Crescent KINCUMBER NSW

3 2 1

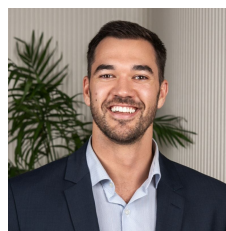
Bathed in sunshine, this single level brick and tile home is in a convenient location with shops, schools, transport and the Kincumber Foreshore all just a short walk away.

The home is light and bright with a formal entry, living room and study nook, and a spacious combined kitchen, dining and family area. There is a rumpus at the rear of the home and a large paved courtyard for entertaining. With a fully fenced backyard this is the perfect home for young families, downsizers or investors.

- * Indoor and outdoor living options
- * Fresh and bright kitchen with plenty of prep and storage room

[For full version visit the website](https://www.changeproperty.com.au/sale/nsw/central-coast-region/kincumber/residential/house/8550235)

Type : House
Land Size : 680 sqm
View : <https://www.changeproperty.com.au/sale/nsw/central-coast-region/kincumber/residential/house/8550235>

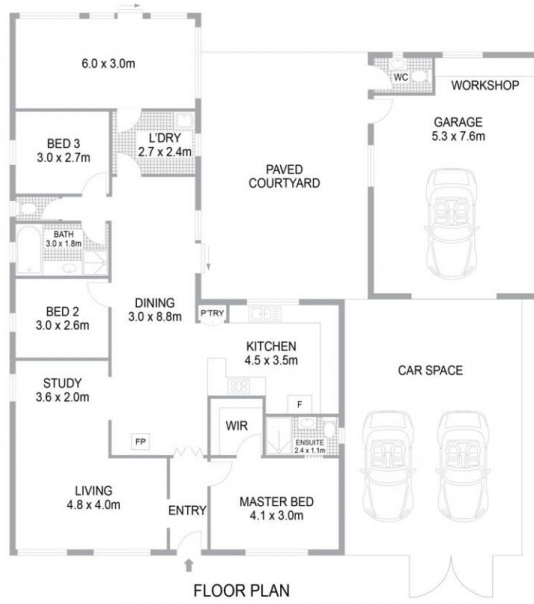


Damian Rutherford
02 4369 2222



Tom O'Gorman
02 4369 2222

15 Samantha Crescent, Kincumber NSW 2251



INTERNAL FLOOR AREA 136m²
LAND SIZE 696m²

Indicative only. All dimensions and element positions are approximate. Information on this plan comes from sources we believe to be accurate, but its accuracy is not guaranteed. Interested parties should make and rely on their own inquiries

georgebrand

