



## 2A Elvys Avenue YATTALUNGA NSW

3 1 1

This lovely 3 bedroom cottage offers filtered views of Brisbane Water and is surrounded by landscaped gardens.

Picture perfect with a white picket fence, the home is fresh and bright with timber floors throughout and offers open plan living, kitchen and dining. The kitchen has been updated with new appliances and splash-back. Stacker doors off the living room open to the new entertaining deck where you can sit and enjoy the tranquil outlook.

There is plenty of room for the children to play in the garden and the local primary school is just moments away. For the boating enthusiast it is only 850m to the local boat ramp!

[For full version visit the website](https://www.changeproperty.com.au)

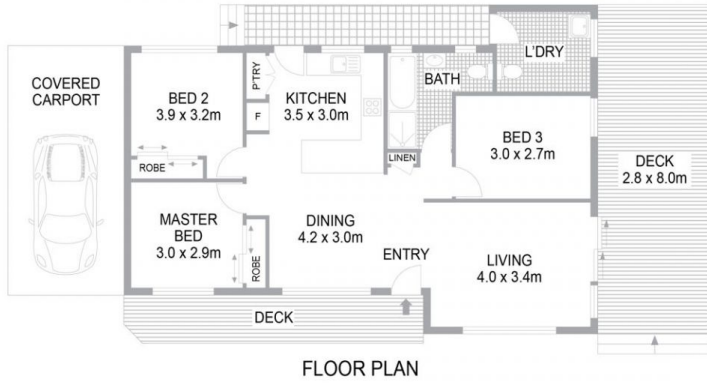
**Type** : House  
**Land Size** : 462 sqm  
**View** : <https://www.changeproperty.com.au/sale/nsw/central-coast-region/yattalunga/residential/house/8550240>



**Tom O'Gorman**  
02 4369 2222



**Damian Rutherford**  
02 4369 2222



INTERNAL FLOOR AREA 84m<sup>2</sup>  
LAND SIZE 486m<sup>2</sup>

Indicative only. All dimensions and element positions are approximate. Information on this plan comes from sources we believe to be accurate, but its accuracy is not guaranteed. Interested parties should make and rely on their own inquiries

georgebrand

