



8 Pickering Place KINCUMBER NSW

5 3 2

Just 3.5kms to Avoca Beach this generously proportioned family home offers an ideal floorplan for the larger or extended family and is situated in a quiet cul-de-sac.

The split level design provides a study, living, kitchen and dining areas upon entry with 3 of the bedrooms upstairs including a large master suite with ensuite. Downstairs there are 2 additional bedrooms with a bathroom and rumpus offering a great option for your teenagers or guests.

- * Multiple living and entertaining options
- * 5 bedrooms plus a study/home office
- * Ceiling fans, ducted air-conditioning, natural gas

[For full version visit the website](https://www.changeproperty.com.au)

Type : House
Land Size : 751.7 sqm
View : <https://www.changeproperty.com.au/sale/nsw/central-coast-region/kincumber/residential/house/8550268>



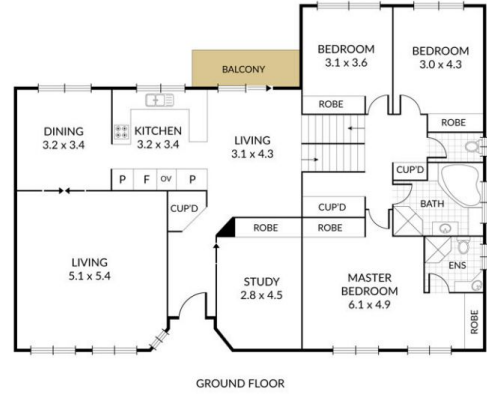
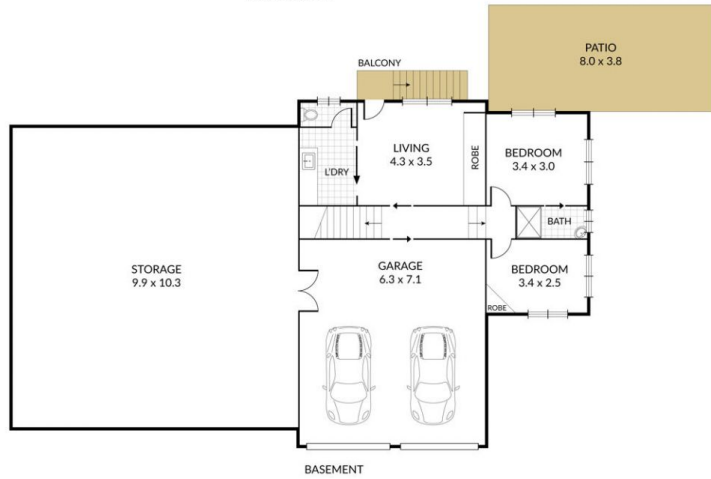
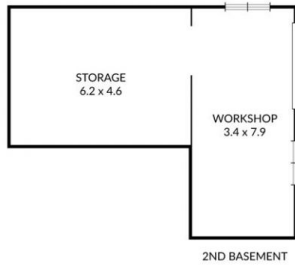
Tom O'Gorman
02 4369 2222

Internal 410m² External 39m² Total 449m²

8 Pickering Place, Kincumber



5 x 3 x 2 x



NOTE: Every precaution has been taken to verify the accuracy of the above details. However, prospective purchasers are advised to make their own enquiries.