

49 Tasman Avenue KILLARNEY VALE NSW

4 2 1

Calling all home builders or renovators! This charming home is circa 1950's with polished timber floors, a fireplace, high ceilings and decorative cornices. Having been added to over the years, with decor reflecting trends of the times, the home offers enormous potential to add to the charm, or knock it down and build your dream home!

Type : House
Land Size : 582 sqm
View : <https://www.changeproperty.com.au/sale/nsw/central-coast-region/killarney-vale/residential/house/8550282>

Offering two living areas plus sunrooms at the rear of the home, 4 bedrooms with built in robes, 2 bathrooms and an internal laundry there is ample space to work with should you want to change the layout to suit your own personal style. Set on a level, fully fenced yard the home is also approximately 2.1kms to Shelly Beach Golf Club and Shelly Beach!

[For full version visit the website](https://www.changeproperty.com.au)

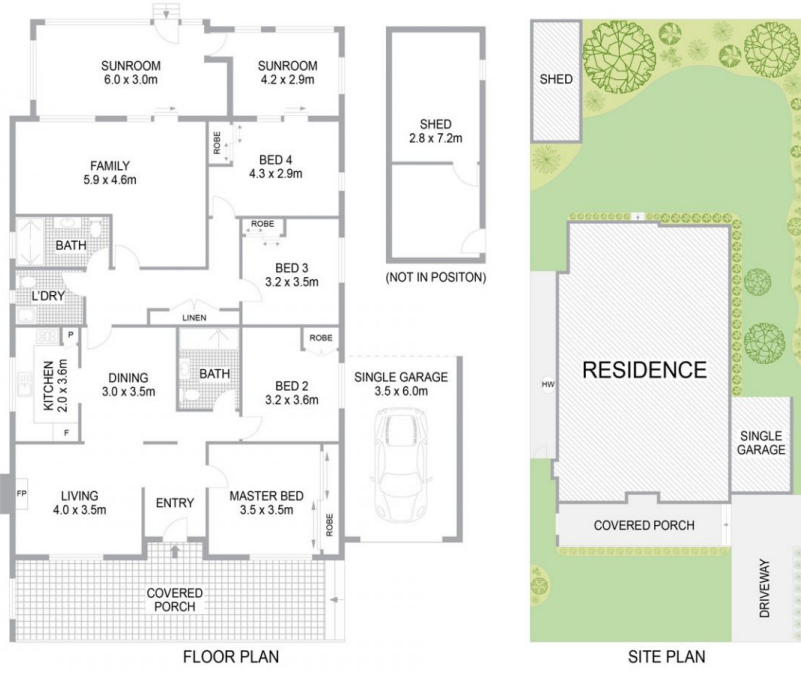


Damian Rutherford
02 4369 2222



Tom O'Gorman
02 4369 2222

49 Tasman Avenue, Killarney Vale NSW 2261



INTERNAL FLOOR AREA 182m²
LAND SIZE 562m²

Indicative only. All dimensions and element positions are approximate. Information on this plan comes from sources we believe to be accurate, but its accuracy is not guaranteed. Interested parties should make and rely on their own inquiries

georgebrand

