



## 12 Taurus Close KINCUMBER NSW

3 2 1

Generously proportioned renovated three bedroom home located in a quiet cul-de-sac offering a bush backdrop with a fully landscaped yard. Stylish, light filled, open plan living/dining area with sliding doors that flow to a covered outdoor entertaining area equipped with an outdoor kitchen. Beautiful large tiles to all living areas and kitchen with carpet to the bedrooms. Perfect for families or entertainers to move straight in and enjoy.

- \* Spacious master bedroom with a brand new ensuite
- \* Large bedrooms with built-ins; ducted air conditioning & ceiling fans throughout
- \* Large open plan living room with formal dining; plantation shutters

[For full version visit the website](https://www.changeproperty.com.au)

**Type** : House  
**Land Size** : 680 sqm  
**View** : <https://www.changeproperty.com.au/sale/nsw/central-coast-region/kincumber/residential/house/8550314>

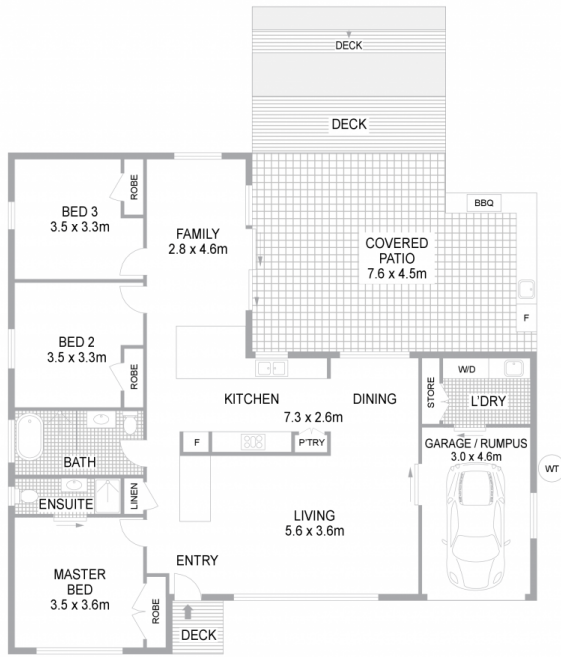


**Tom O'Gorman**  
02 4369 2222

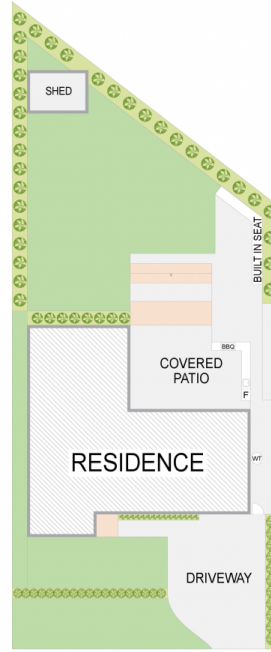


**Damian Rutherford**  
02 4369 2222

# 12 Taurus Close, Kincumber NSW 2251



FLOOR PLAN



SITE PLAN

INTERNAL FLOOR AREA 150m<sup>2</sup>  
LAND SIZE 684m<sup>2</sup>

Indicative only. All dimensions and element positions are approximate. Information on this plan comes from sources we believe to be accurate, but its accuracy is not guaranteed. Interested parties should make and rely on their own inquiries

georgebrand

