



10 Kimbarra Close KINCUMBER NSW

4 1 4

This lovely home is located at the end of a cul-de-sac and is just 120m to the primary school, making it a perfect fit for young families or investors.

With plenty of covered parking there is room for your boat and caravan, and there is also a fenced off back yard for children and pets. The home is beautifully presented with a large open plan living, kitchen and dining area that leads to the covered outdoor entertaining deck. The modern kitchen is light and bright with sleek appliances, stone benchtops, pantry and breakfast bar for informal dining.

- * Open plan living
- * Air conditioning

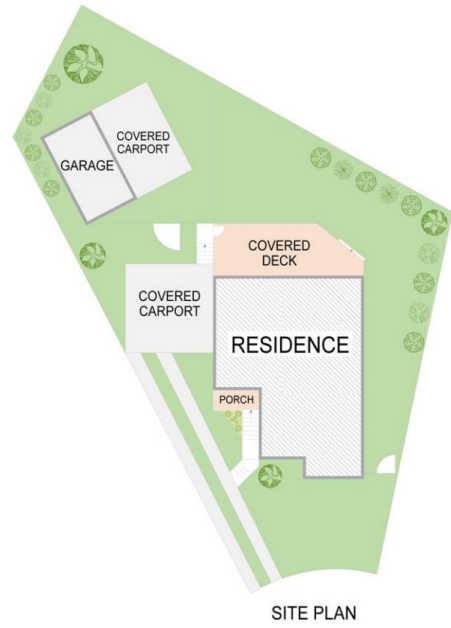
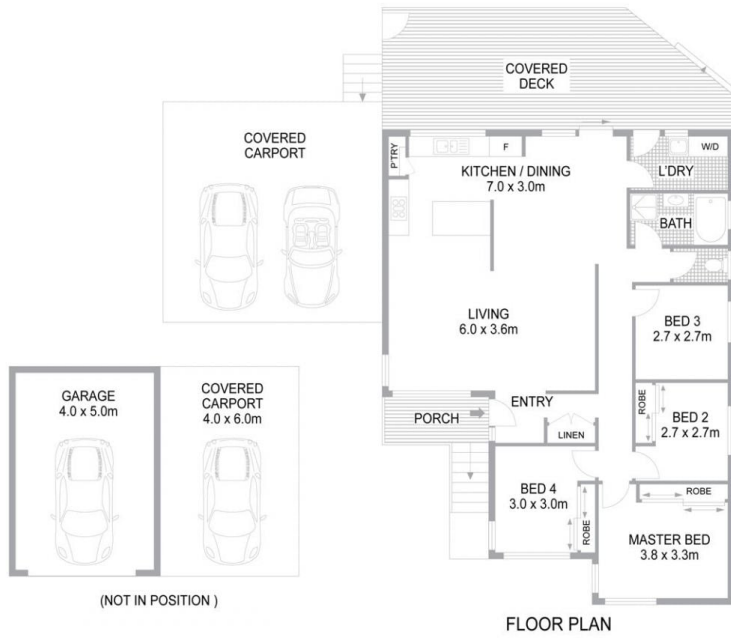
[For full version visit the website](https://www.changeproperty.com.au)

Type : House
Land Size : 698 sqm
View : <https://www.changeproperty.com.au/sale/nsw/central-coast-region/kincumber/residential/house/8550332>



Tom O'Gorman
02 4369 2222

10 Kimbarra Close, Kincumber NSW 2251



INTERNAL FLOOR AREA 113m²
LAND SIZE 685m²

Indicative only. All dimensions and element positions are approximate. Information on this plan comes from sources we believe to be accurate, but its accuracy is not guaranteed. Interested parties should make and rely on their own inquiries

georgebrand

