



8 Colleena Close KINCUMBER NSW

5 2 1

If you're looking for a beautiful family home in a quiet location then you must put this property at the top of your list.

Situated on a 610m² block, this well presented home has multiple living areas including lounge, dining and separate family room as well as a large fully enclosed entertaining area overlooking the sparkling inground pool -- perfect for the entertainer or a space to relax and unwind. Other features of the property include a modern kitchen with stone benchtops, gas cook top, pantry and ample storage.

- * 2 living areas
- * Fully enclosed entertaining area

[For full version visit the website](https://www.changeproperty.com.au)

Type : House
Land Size : 610 sqm
View : <https://www.changeproperty.com.au/sale/nsw/central-coast-region/kincumber/residential/house/8550337>

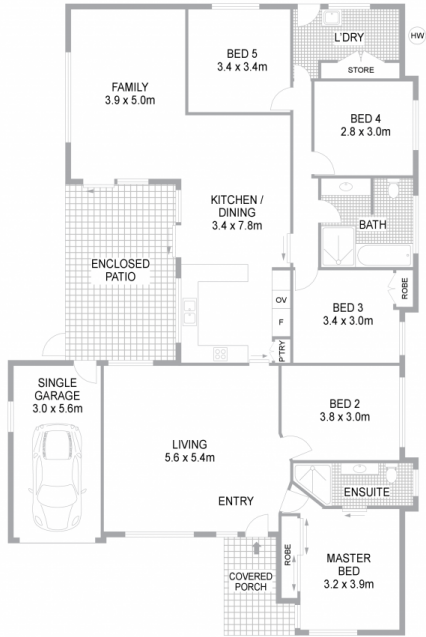


Tom O'Gorman
02 4369 2222

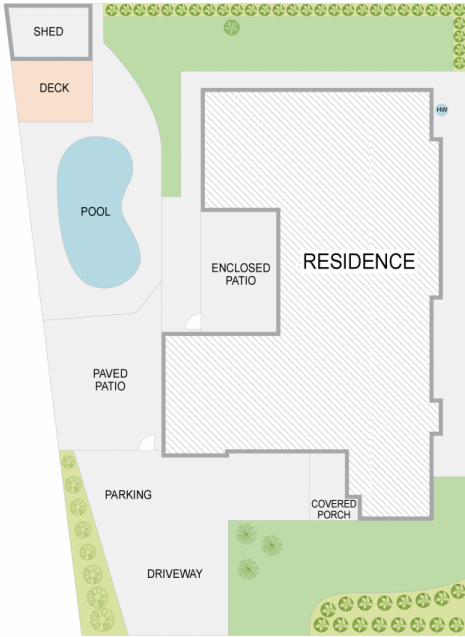


Damian Rutherford
02 4369 2222

8 Colleena Close, Kincumber NSW 2251



FLOOR PLAN



SITE PLAN

INTERNAL FLOOR AREA 211m²
 LAND SIZE 610m²

Indicative only. All dimensions and element positions are approximate. Information on this plan comes from sources we believe to be accurate, but its accuracy is not guaranteed. Interested parties should make and rely on their own inquiries



georgebrand