



1/2 Island View Drive KINCUMBER NSW

2 1 1

This immaculate brick and tile 2 bedroom duplex is only a short walk to the local shopping centre, library and also has easy access to Kincumba Mountain Reserve.

Offering a light filled living room flowing onto a dining room and kitchen, the home also provides a Queenslander / second living area that opens onto the courtyard with manicured hedges and views to the Kincumber Broadwater. A separate outdoor paved area is covered for protection from the weather and has extra storage as well.

Split system air conditioning and a slow combustion fire will keep you comfortable all year round. Storage abounds with the main bedroom featuring a walk in wardrobe and the

[For full version visit the website](https://www.changeproperty.com.au)

Type : Villa
Land Size : 212 sqm
View : <https://www.changeproperty.com.au/sale/nsw/central-coast-region/kincumber/residential/villa/8550349>

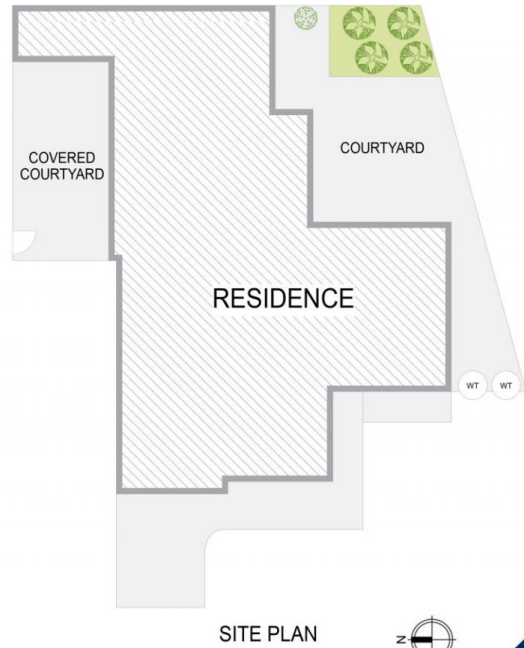
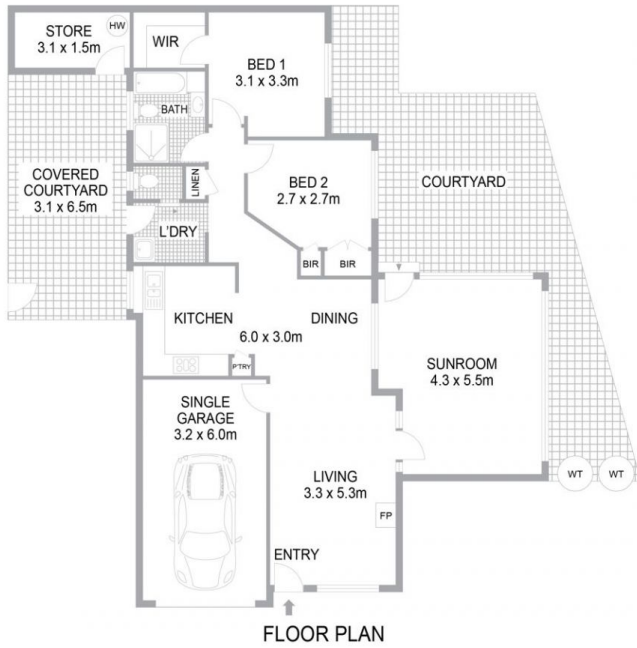


Tom O'Gorman
02 4369 2222



Damian Rutherford
02 4369 2222

1/2 Island View Drive, Kincumber NSW 2251



INTERNAL FLOOR AREA 129m²

Indicative only. All dimensions and element positions are approximate. Information on this plan comes from sources we believe to be accurate, but its accuracy is not guaranteed. Interested parties should make and rely on their own inquiries

georgebrand

