



### 18 Linell Close KINCUMBER NSW

3 2 2

Tucked away in a quiet cul-de-sac close to schools, shops and transport, this 3 bedroom brick and tile home would suit families, investors and downsizers alike. Less than 10 minutes to Avoca Beach where you can enjoy the beach/cafe lifestyle year round.

**Type** : House  
**Land Size** : 682 sqm  
**View** : <https://www.changeproperty.com.au/sale/nsw/central-coast-region/kincumber/residential/house/8550361>

Featuring separate dining and living rooms, spacious renovated kitchen, sun filled backyard with an undercover entertaining area and oversized tandem lock up garage.

- \* Beautifully renovated kitchen with gas cooking
- \* Covered entertaining area to enjoy
- \* Floating timber floors throughout the living areas
- \* Split system air-conditioning and fans

[For full version visit the website](https://www.changeproperty.com.au)

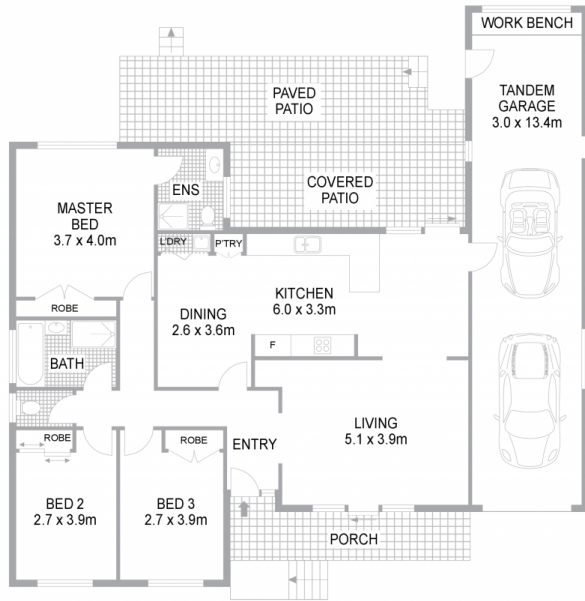


**Tom O'Gorman**  
02 4369 2222

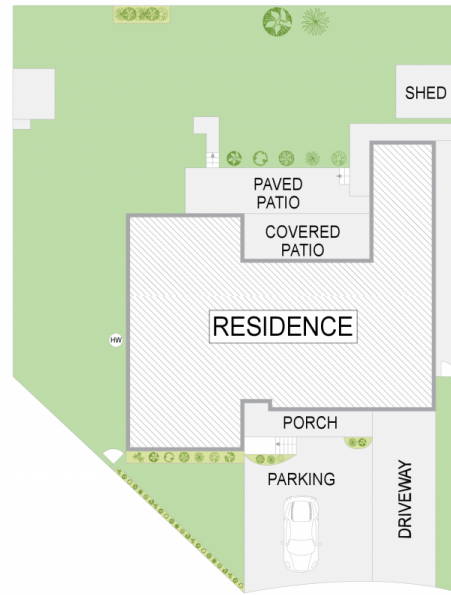


**Damian Rutherford**  
02 4369 2222

# 18 Linell Close, Kincumber NSW 2251



FLOOR PLAN



SITE PLAN

INTERNAL FLOOR AREA 161m<sup>2</sup>  
LAND SIZE 682m<sup>2</sup>

Indicative only. All dimensions and element positions are approximate. Information on this plan comes from sources we believe to be accurate, but its accuracy is not guaranteed. Interested parties should make and rely on their own inquiries



georgebrand

