



11 Booral Close KINCUMBER NSW

3 1 1

This lovely home is immaculate throughout and set in on a sunny north facing block in tranquil location at the end of a cul-de-sac. With Kincumber Creek and access to the Broadwater at the rear all you need is your tinny and a fishing rod!

Featuring a spacious living room and a combined kitchen dining living that leads to the covered outdoor entertaining patio, the home also offers a modern stone kitchen with glass splash-backs and plenty of storage and bench space.

- * Split system air conditioning
- * On-trend kitchen with stone benchtops & glass

[For full version visit the website](https://www.changeproperty.com.au)

Type : House
Land Size : 687.8 sqm
View : <https://www.changeproperty.com.au/sale/nsw/central-coast-region/kincumber/residential/house/8550372>

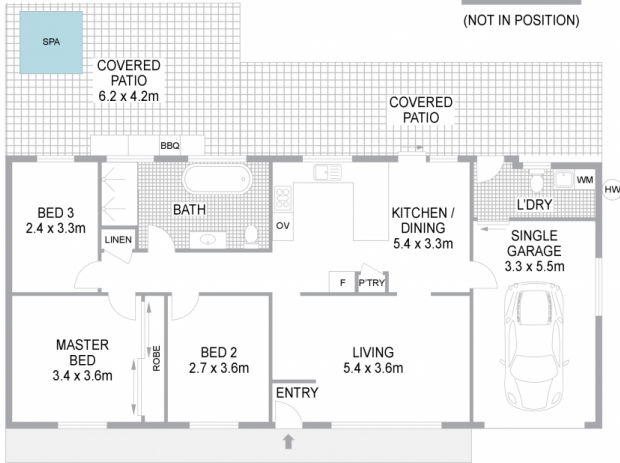
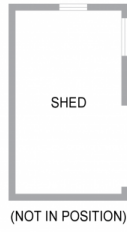


Tom O'Gorman
02 4369 2222



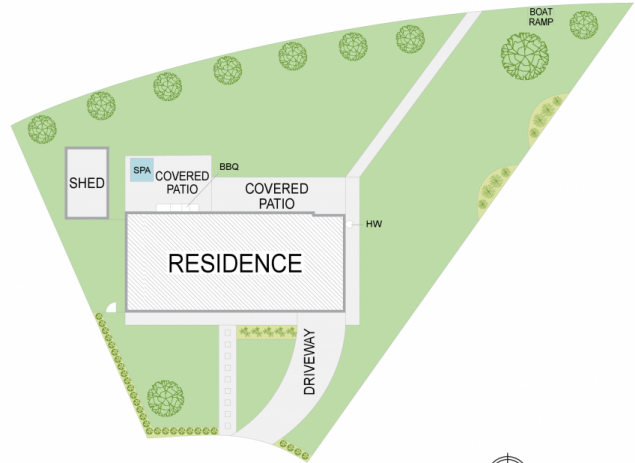
Damian Rutherford
02 4369 2222

11 Booralgal Close, Kincumber NSW 2251



FLOOR PLAN

INTERNAL FLOOR AREA 126m²
LAND SIZE 688m²



SITE PLAN

Indicative only. All dimensions and element positions are approximate. Information on this plan comes from sources we believe to be accurate, but its accuracy is not guaranteed. Interested parties should make and rely on their own inquiries



georgebrand

