



## 2 Woodfield Road KINCUMBER NSW

4 2 2

This immaculate single level home offers a tranquil, low maintenance lifestyle allowing plenty of time to enjoy the Central Coast's finest beaches, waterways and National Parks.

With an easy flow floorplan the home provides light filled living and dining areas that flow to a private covered outdoor entertaining area. There are four spacious bedrooms with built-ins, the master with walk-in-robe and ensuite, and the modern bathroom offers a luxurious free-standing bath with separate WC. The home enjoys bush views and is peacefully positioned in a sought-after area of Kincumber.

**Type** : House  
**Land Size** : 669.5 sqm  
**View** : <https://www.changeproperty.com.au/sale/nsw/central-coast-region/kincumber/residential/house/8550378>

[For full version visit the website](https://www.changeproperty.com.au)



**Tom O'Gorman**  
02 4369 2222



**Damian Rutherford**  
02 4369 2222

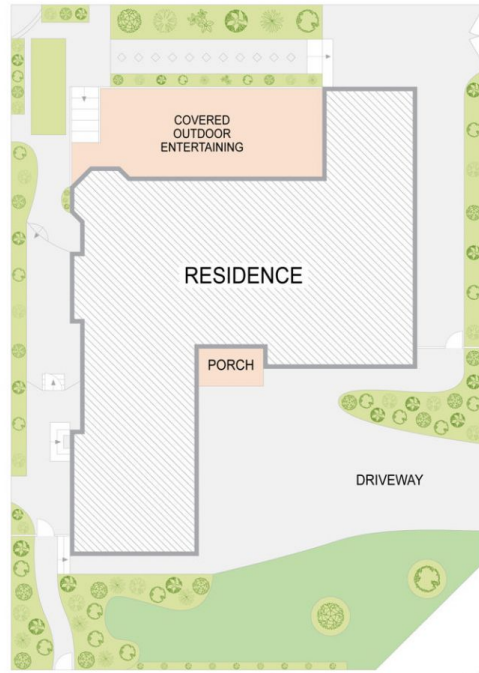
## 2 Woodfield Road, Kincumber, NSW 2251



FLOOR PLAN

INTERNAL FLOOR AREA 194m<sup>2</sup>  
LAND SIZE 670m<sup>2</sup>

Indicative only. All dimensions and element positions are approximate. Information on this plan comes from sources we believe to be accurate, but its accuracy is not guaranteed. Interested parties should make and rely on their own inquiries



SITE PLAN



georgebrand

