



## 25 Figtree Bay Drive KINCUMBER NSW

4 2 2

Set at the end of a private cul-de-sac within the prestigious Figtree Bay Estate, this stunning single-level home is immaculate throughout and across the road from access stairs to the foreshore and the walking/cycle path.

The home is beautifully designed with open-plan living and dining options as well as a separate rumpus room. There are four spacious bedrooms including a generous and privately set master suite with a walk-in-robe, ensuite, and access to the covered patio.

- \* Ducted air conditioning & gas fireplace in the family room
- \* Open-plan living and dining options
- \* Additional rumpus room + office

[For full version visit the website](https://www.changeproperty.com.au)

**Type** : House  
**Land Size** : 661 sqm  
**View** : <https://www.changeproperty.com.au/sale/nsw/central-coast-region/kincumber/residential/house/8550382>

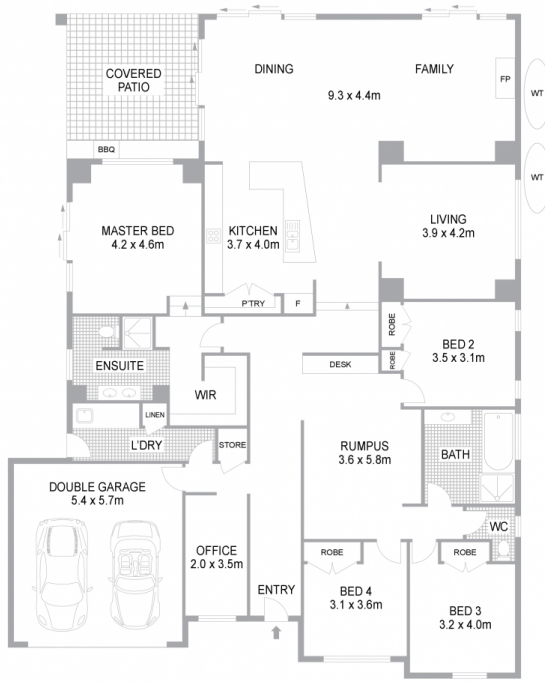


**Tom O'Gorman**  
02 4369 2222

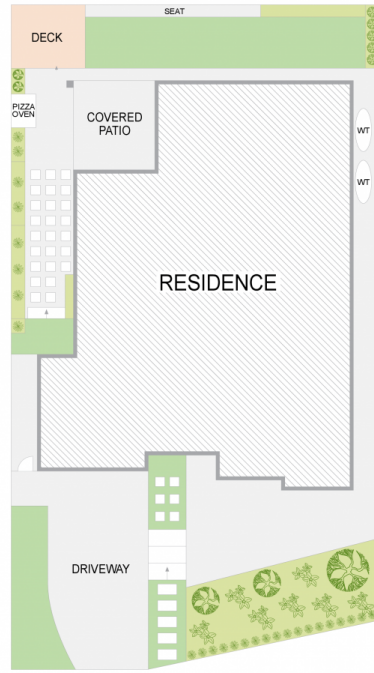


**Damian Rutherford**  
02 4369 2222

# 25 Figtree Bay Drive, Kincumber NSW 2251



FLOOR PLAN



SITE PLAN

INTERNAL FLOOR AREA 294m<sup>2</sup>  
 LAND SIZE 652m<sup>2</sup>

Indicative only. All dimensions and element positions are approximate. Information on this plan comes from sources we believe to be accurate, but its accuracy is not guaranteed. Interested parties should make and rely on their own inquiries



georgebrand

