



### 75A Hume Boulevard KILLARNEY VALE NSW

3 2 2

This near new home is set on a low maintenance block and would be perfect for downsizers or those looking to get into the market! Just 850m to the foreshore and cycle track, the home is tastefully finished with on trend decor and a lovely neutral colour palette.

An open plan living dining, kitchen area that flows to the outdoor barbeque area with the perfectly placed for entertaining family and friends. The bedrooms are spacious with two of the bedrooms having built-ins and the master offers a walk-in robe and modern ensuite!

- \* Open plan living
- \* Partially covered entertaining deck

[For full version visit the website](https://www.changeproperty.com.au/sale/nsw/central-coast-region/killarney-vale/residential/house/8550387)

**Type** : House  
**Land Size** : 459 sqm  
**View** : <https://www.changeproperty.com.au/sale/nsw/central-coast-region/killarney-vale/residential/house/8550387>

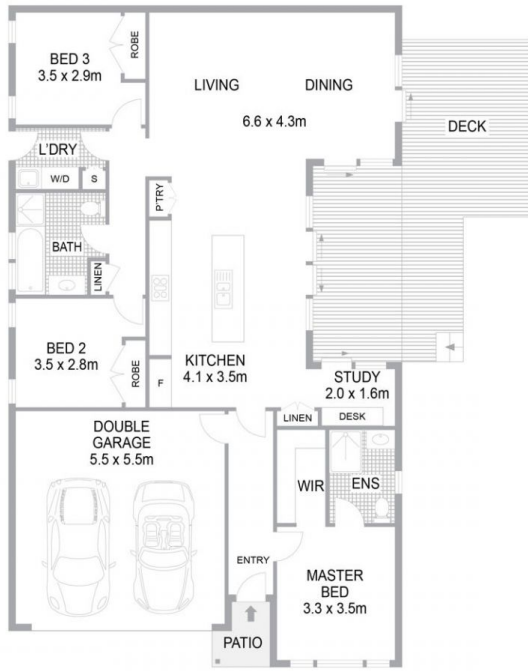


**Damian Rutherford**  
02 4369 2222



**Tom O'Gorman**  
02 4369 2222

# 75A Hume Boulevard, Killarney Vale NSW 2261



FLOOR PLAN



SITE PLAN

INTERNAL FLOOR AREA 158m<sup>2</sup>  
LAND SIZE 460m<sup>2</sup>

Indicative only. All dimensions and element positions are approximate. Information on this plan comes from sources we believe to be accurate, but its accuracy is not guaranteed. Interested parties should make and rely on their own inquiries

georgebrand

