



6 Parkwood Close KINCUMBER NSW

3  1  1 

Set in a in a leafy cul-de-sac behind a picket fence next to reserve, this neat and tidy home is perfect for those looking to be close to local schools, shops and transport.

Freshly painted throughout and with new flooring the home offers open plan living, kitchen and dining and there are three bedrooms, two with built-in-robos. There is a paved patio area for entertaining and a lovely level backyard for children and pets.

- * Open plan living, kitchen and dining
- * Kitchen with island bench & s/s appliances
- * Paved patio area
- * Modern bathroom & kitchen

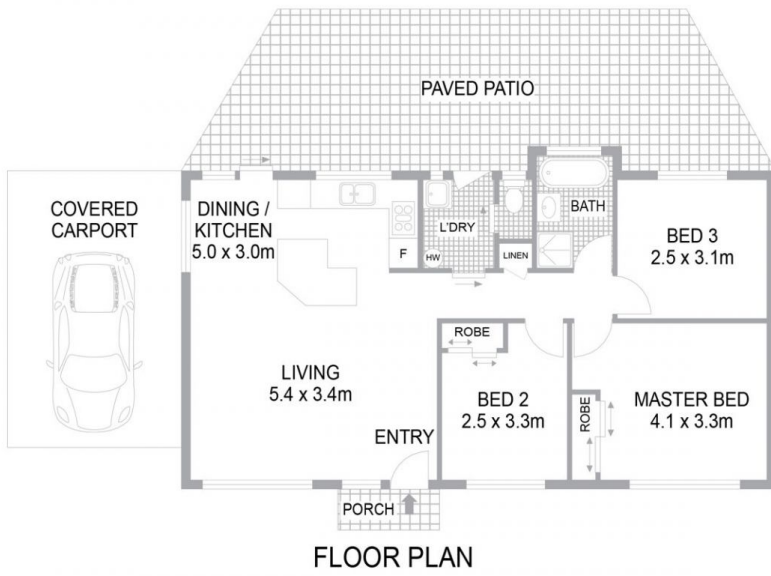
[For full version visit the website](https://www.changeproperty.com.au/sale/central-coast-region/kincumber/residential/house/8550417)

Type : House
Land Size : 696 sqm
View : <https://www.changeproperty.com.au/sale/central-coast-region/kincumber/residential/house/8550417>



Tom O'Gorman
02 4369 2222

6 Parkwood Close, Kincumber NSW 2251



INTERNAL FLOOR AREA 75m²
LAND SIZE 696m²

Indicative only. All dimensions and element positions are approximate. Information on this plan comes from sources we believe to be accurate, but its accuracy is not guaranteed. Interested parties should make and rely on their own inquiries

georgebrand

