

24 Kingfisher Close Kincumber NSW

5 2 2

Set in a tranquil cul-de-sac just a short walk to the local schools and the shopping village, this gracious home combines expansive living and entertaining options with generously proportioned rooms throughout.

The entry foyer leads to a separate formal living room and there is an open plan kitchen, dining, sitting room as well as a family room, plus the office/5th bedroom. Upstairs is an additional living area and four bedrooms, the master with ensuite and walk in robe. Exuding warmth and charm this home has been beautifully maintained and offers ample space for extended family and guests!

* Combustion fireplace in the rear family room

[For full version visit the website](https://www.changeproperty.com.au)

Type : House
Price : \$ 1,450,000
Building Size : 314 sqm
Land Size : 725 sqm
View : <https://www.changeproperty.com.au/sale/nsw/central-coast-region/kincumber/residential/house/8550463>

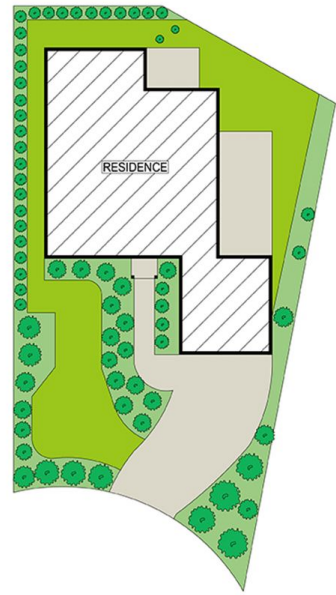
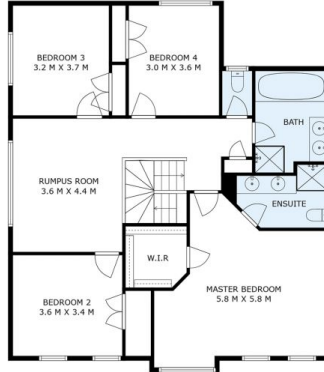
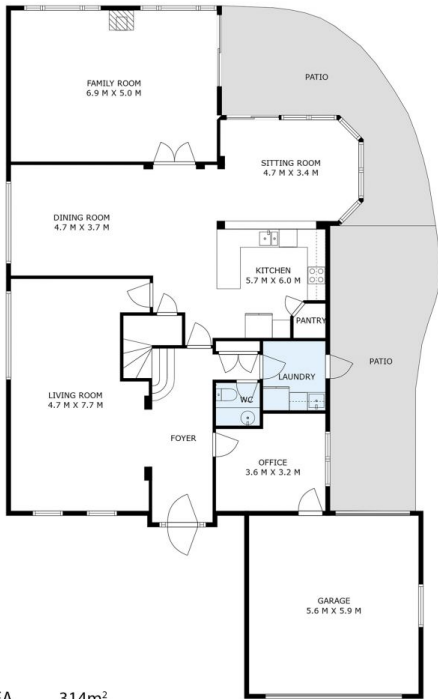


Tom O'Gorman



Damian Rutherford

24 Kingfisher Close, Kincumber NSW 2251



SITE PLAN (NOT TO SCALE)



INTERNAL AREA 314m²
EXTERNAL AREA 55m²

Indicative only. All dimensions and element positions are approximate. Information on this plan comes from sources we believe to be accurate, but its accuracy is not guaranteed. Interested parties should make and rely on their own inquiries

georgebrand

