



### 43 Empire Bay Drive Kincumber NSW

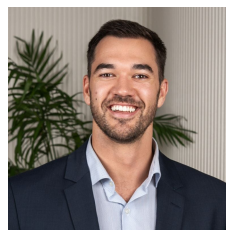
3 2 1

Set on a generous 1023.9sqm parcel, this versatile property offers multiple living options with the added benefit of DA-approved plans for two SEPP Housing villas, including Specialist Disability Accommodation (SDA). Centrally located on the bus route and close to schools, shops, parks, and sporting fields, it's a fantastic opportunity for investors, developers, or families seeking space and flexibility.

The current home features a large master bedroom with built-in robe and ceiling fan, a second bedroom, polished timber floorboards, a functional kitchen, and a living area that flows to a covered verandah. In addition, a self-contained studio/3rd bed with private deck and

[For full version visit the website](https://www.changeproperty.com.au)

**Type** : House  
**Price** : \$ 937,000  
**Land Size** : 1023.9 sqm  
**View** : <https://www.changeproperty.com.au/sale/central-coast-region/kincumber/residential/house/8550513>

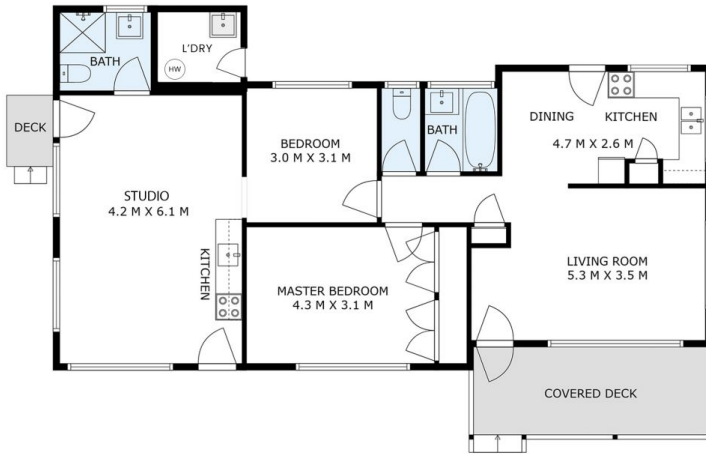


**Damian Rutherford**  
02 4369 2222



**Tom O'Gorman**  
02 4369 2222

# 43 Empire Bay Drive, Kincumber



INTERNAL AREA 94m<sup>2</sup>  
EXTERNAL AREA 13m<sup>2</sup>  
GARAGE AREA 19m<sup>2</sup>

Indicative only. All dimensions and element positions are approximate. Information on this plan comes from sources we believe to be accurate, but its accuracy is not guaranteed. Interested parties should make and rely on their own inquiries

**georgebrand**

