



## 5 Island View Drive Kincumber NSW

4 2 2

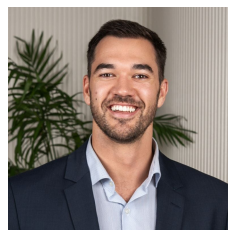
Set against a leafy backdrop and offering easy access to Kincumba Mountain Reserve, this spacious and fully renovated home captures water views and provides ample room for the whole family.

Freshly painted and renovated throughout, the home is move-in ready. The ground floor features a welcoming entry foyer leading to a generous family room, additional bedroom, and bathroom off the laundry - ideal accommodation for teens, guests or extended family. There is also level and direct access from the double garage.

Upstairs features a light-filled living area with split system air conditioning, polished timber floors, and a brand-new

[For full version visit the website](https://www.changeproperty.com.au/sale/nsw/central-coast-region/kincumber/residential/house/8563382)

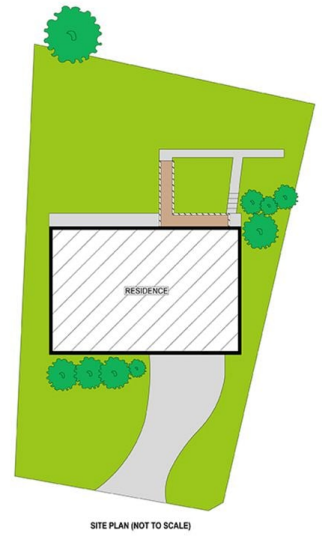
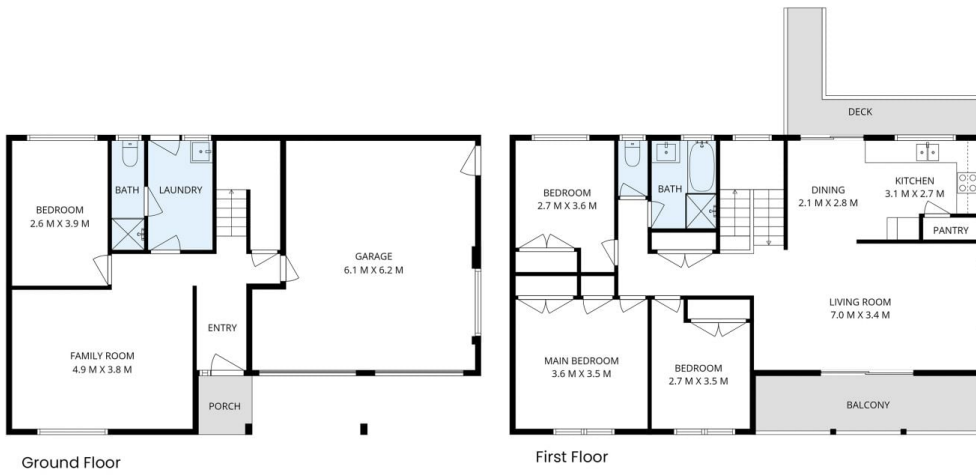
**Type** : House  
**Building Size** : 140 sqm  
**Land Size** : 600 sqm  
**View** : <https://www.changeproperty.com.au/sale/nsw/central-coast-region/kincumber/residential/house/8563382>



**Damian Rutherford**  
02 4369 2222



**Tom O'Gorman**  
02 4369 2222



INTERNAL AREA	140m <sup>2</sup>
EXTERNAL AREA	17m <sup>2</sup>
CAR	34m <sup>2</sup>

## 5 Island View Drive, Kincumber

The information contained in this document has been provided by third parties. Change Property has not yet checked the information and merely passes it on, not having a belief one way or the other to accuracy. Interested parties should make their own inquiries.

**CHANGE**  
PROPERTY